

ACOMA TOWNSHIP

Each township has six files containing six sections in each, and one file containing all 36 sections.

Acoma01to06.pdf

Acoma07to12.pdf

Acoma13to18.pdf

Acoma19to24.pdf

Acoma25to30.pdf

Acoma31to36.pdf

AcomaAll36.pdf

The points are listed starting with the point above the SE corner and continuing in a counter-clockwise rotation around the section. This normally begins with the East point, Northeast, then North, but may also include Witness Corners, and/or Meander Corners.

Definitions

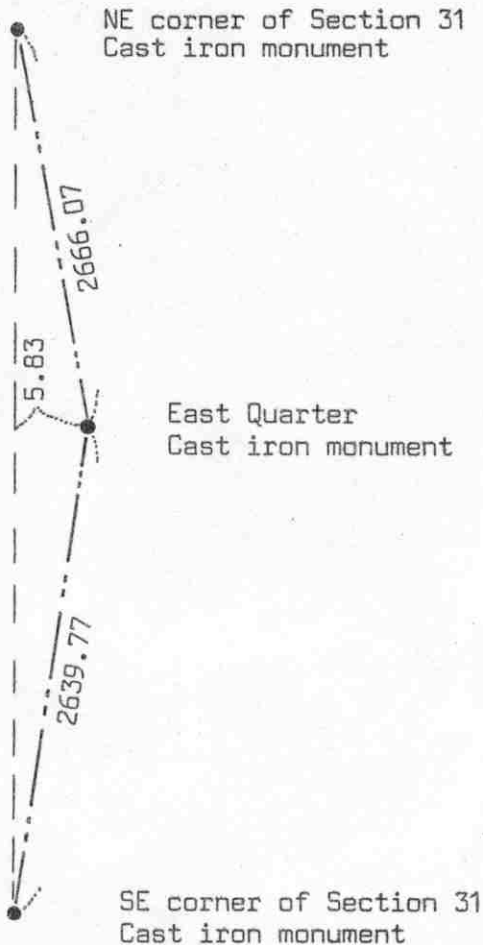
Witness Corner: A witness corner “stands in” when the true corner cannot be monumented or occupied because of difficult terrain or obstruction of the corner sight. The witness corner must be on the section line and is usually 5 or 10 chains away from the true corner.

Meander Corner: The intersection of a township, range, or section line and the banks of a navigable stream or meandering body of water.

Certificate of Location of Government Corner



SKETCH OF REFERENCE TIES
(NO SCALE)



Statement of evidence relative to this corner location on sheet 2

I hereby certify that this document was prepared by me or under my direct supervision.

Willard Pellinen
 Willard Pellinen
 McLeod County Surveyor
 License No. 9626
 Date 7/15/89

OFFICE OF THE COUNTY RECORDER
MCLEOD COUNTY, MINNESOTA.

I hereby certify that this document was filed in this office at 9 o'clock A.M. on the 18th day of July, 19 89.

Carmen Ostlie, County Recorder
 By _____, Deputy

Document No. 229065

EAST QUARTER corner, Section 31 , Township 117 North, Range 30 West

Certificate of Location of Government Corner

This corner was originally set by the Government Land Office in 1856. D.L.Langton "set quarter section post, drove charred stake, raised mound of earth and planted locust seeds at corners of trench as per instructions."

On February 24, 1984, we measured the east line of Section 31 and found the base of a large fence post down $\frac{1}{2}$ foot. We dug around the post and down $1\frac{1}{2}$ feet below the surface found a 1 inch diameter iron pin. At about $\frac{1}{2}$ way between this pin and the northeast corner of the section we found an iron stake beside a large fence post and about $\frac{1}{2}$ way between the found iron pin and the southeast corner of the section was a fence line running east-west. We talked to George Froemming, who lives in Section 31 and owns land on both sides of the east-west quarter line of Section 31. He said about 50 years ago I.C.Christlieb surveyed the east line of Section 31 and set iron stakes at the $\frac{1}{16}$ corners. We ran the east west quarter line of Section 32 and the fence near the center of the section is within 2 feet of being on line.

On May 14, 1984 we set a McLeod County cast iron monument over the found iron pin.

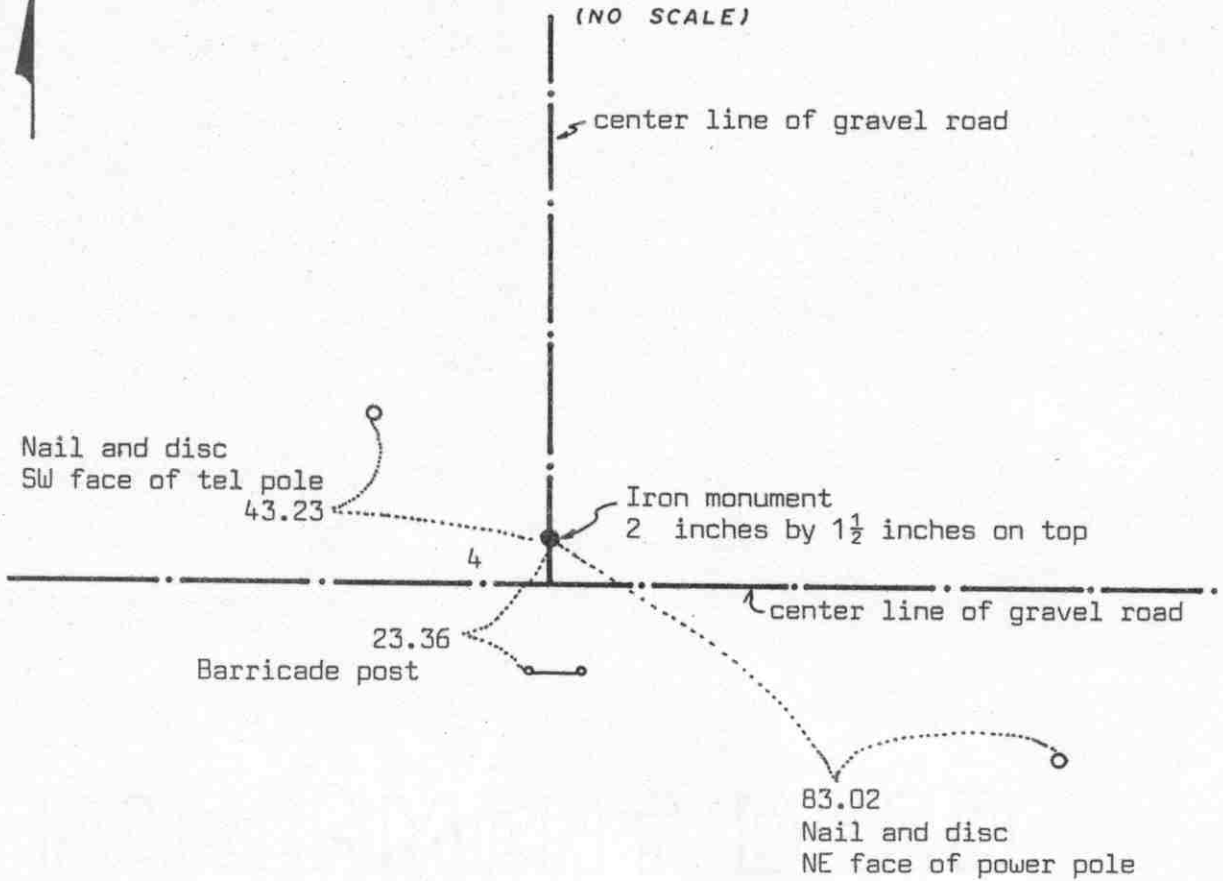
We believe the found iron pin was the same pin set by Christlieb about 50 years ago and the found iron stake $\frac{1}{4}$ mile north was the $\frac{1}{16}$ corner set by Christlieb. We feel the found iron pin has perpetuated the correct location of the quarter corner.

Certificate of Location of Government Corner



SKETCH OF REFERENCE TIES

(NO SCALE)



Statement of evidence relative to this corner location on sheet 2

I hereby certify that this document was prepared by me or under my direct supervision.

Willard Pellinen
 Willard Pellinen
 McLeod County Surveyor
 License No. 9626
 Date 5/7/89

OFFICE OF THE COUNTY RECORDER
MCLEOD COUNTY, MINNESOTA.

I hereby certify that this document was filed in this office at 9 o'clock A.M. on the 19th day of May, 1989.

Armin Postle, County Recorder
 By _____, Deputy

Document No. 228253

Certificate of Location of Government Corner

This corner was originally set by the government in 1856. D. L. Langton "set post common to Sections 29, 30, 31 and 32. Drove charred stake, raised mound of earth, planted locust seeds at corners of trench as per instructions."

1920. E. L. Higgins survey notes show he found an iron pin at the corner.

April , 1975. We dug for the corner and found a 2 inch by 1½ inch (on top) iron monument at the corner. George Froemming, in Northeast Quarter of Section 31, says this monument is the correct section corner. This monument was 4 feet north of the center line intersection of the roads. We took reference ties.

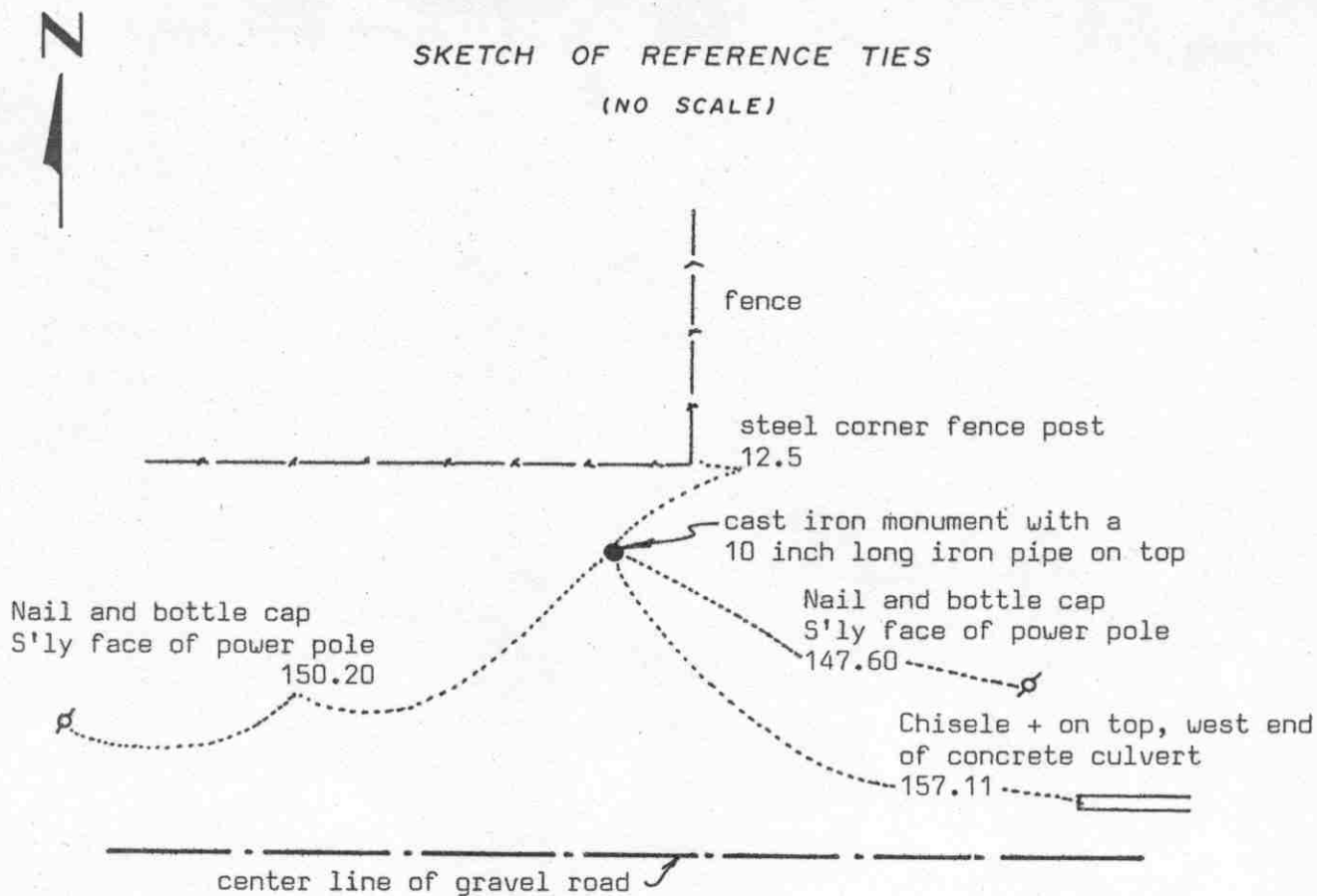
February 14, 1989. We found the iron monument and the reference ties taken in 1975 good.

We don't know who set this iron monument, but there being no evidence to the contrary, we accept the monument as having perpetuated the correct location of the section corner.

Certificate of Location of Government Corner

SKETCH OF REFERENCE TIES

(NO SCALE)



Statement of evidence relative to this corner location on sheet 2

I hereby certify that this document was prepared by me or under my direct supervision.

Willard Pellinen

Willard Pellinen
McLeod County Surveyor
License No. 9626

Date 4/16/89

OFFICE OF THE COUNTY RECORDER
MCLEOD COUNTY, MINNESOTA.

I hereby certify that this document was filed in this office at 9 o'clock A.M. on the 19th day of May, 1989.

Carmen Ostlie, County Recorder

By _____, Deputy

Document No. 228254

NORTH QUARTER corner, Section 31, Township 117 North, Range 30 West

Certificate of Location of Government Corner

This corner was originally set by the government in 1856. D.L.Langton set the quarter section post, drove a charred stake, raised a mound of earth and planted locust seeds at corners of trench as per instructions.

On November 29, 1979, we measured the north line of Section 31 and found a $\frac{1}{2}$ inch diameter iron rod in line with a field line running south.

On December 5, 1979, we talked with George Froemming who lives in the Northeast Quarter of Section 31. He was on the Township Board 3 years ago when the road was graded and moved south. He said the corner was found at that time but was taken out by road construction. Harvey Zummach, 68, used to own farm in Section 30 at the north quarter corner of Section 31. He says corner was destroyed at the time the road was rebuilt.

The $\frac{1}{2}$ inch iron rod was at the location of the old road and Mr. Froemming and Mr. Zummach said this was close to where the corner should be. They don't know who set the iron rod. This rod was probably set to replace the destroyed corner by the road contractor or it could have been below the old road bed. A straight line to the north quarter corner of Section 30 hits a fence corner $\frac{1}{4}$ mile north, and a fence running north $\frac{1}{4}$ mile west falls on the 1/16 line.

We set a cast iron monument in place of the found iron rod and took reference ties. We set a 10 inch long iron pipe over the monument.

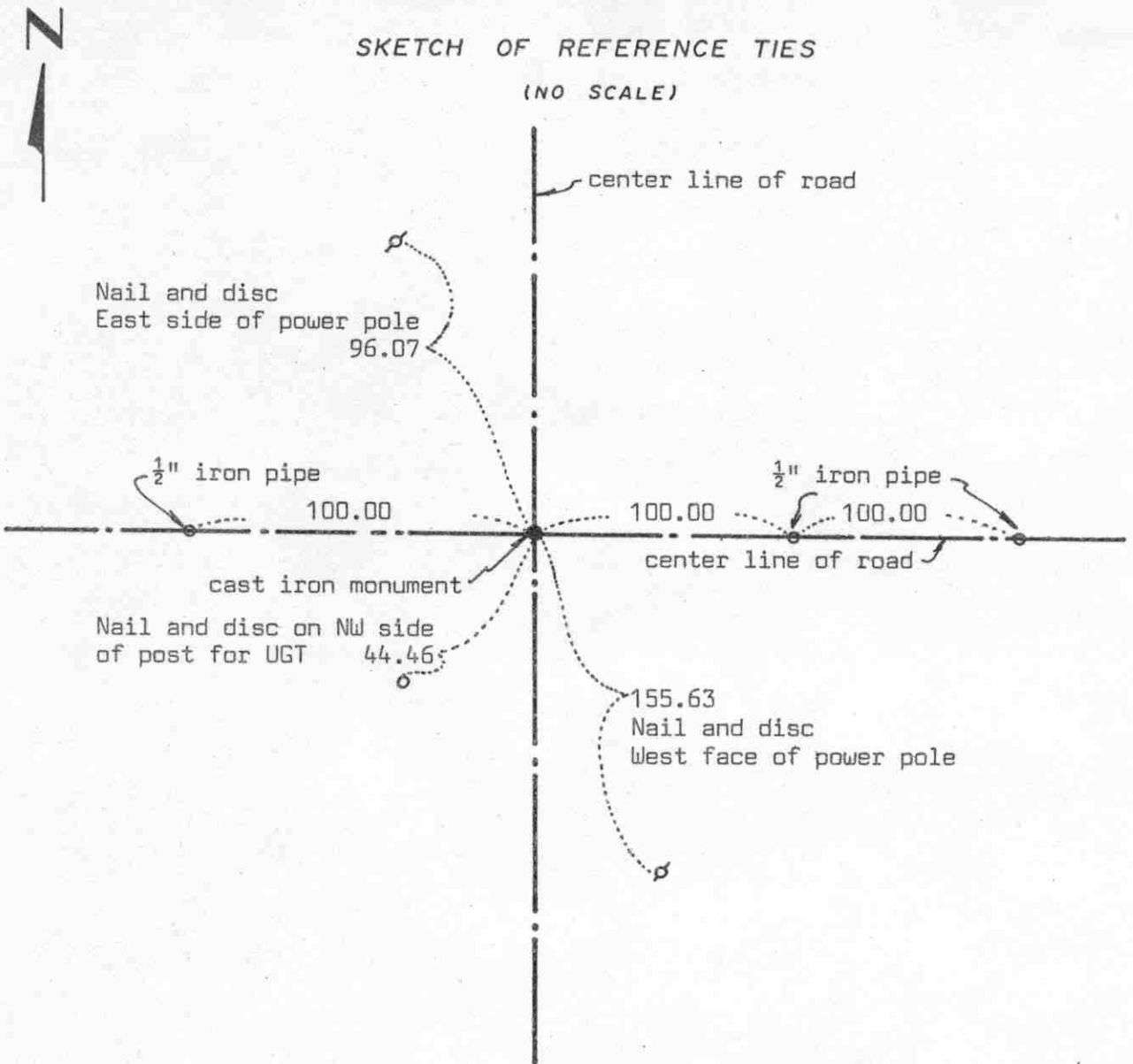
On February 14, 1989, we found the iron pipe (over the monument) and only 1 reference tie remaining. We took additional ties.

We don't know who set the iron rod but we will accept it as the correct quarter corner of Section 31.

Certificate of Location of Government Corner

SKETCH OF REFERENCE TIES

(NO SCALE)



Statement of evidence relative to this corner location on sheet 2

I hereby certify that this document was prepared by me or under my direct supervision.

Willard Pellinen
 Willard Pellinen
 McLeod County Surveyor
 License No. 9626

Date 5/6/89

OFFICE OF THE COUNTY RECORDER
 MCLEOD COUNTY, MINNESOTA.

I hereby certify that this document was filed in this office at 9 o'clock A.M. on the 19th day of May, 1989.

Carmen Ostlie, County Recorder
 By _____, Deputy

Document No. 228255

NORTHWEST corner, Section 31, Township 117 North, Range 30 West

Certificate of Location of Government Corner

This corner was originally set by the government in 1855. John Ryan "set post in mound with pits and trench as per instructions and deposit of charcoal."

1909. N.Y. Taylor survey notes show an iron monument at this corner.

Meeker County Highway Department records show a 3 inch diameter iron pipe at the corner.

On January 3, 1972, we found a 3 inch diameter iron pipe at the center line - center line intersection of roads. The location agrees with reference ties from the Meeker County Highway Engineer. This iron pipe was within 2 feet of the distance to the west quarter corner of Section 30 as Taylor had in 1909.

On August 17, 1973, we took new reference ties.

On June 20, 1974, we replaced the iron pipe with a McLeod County cast iron monument and took new reference ties.

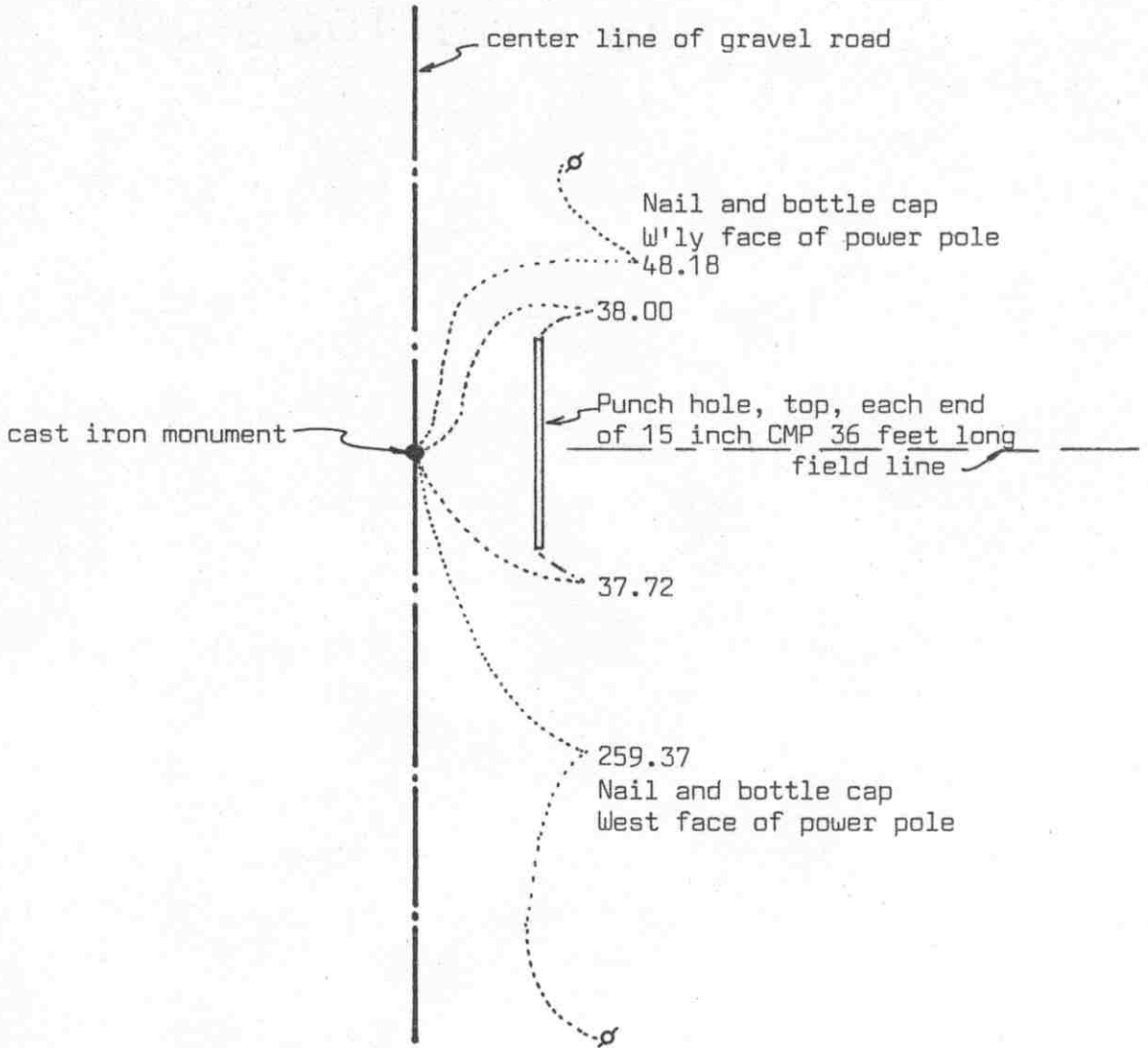
On February 14, 1989, we found the monument and reference ties good.

We accept the found iron pipe as having perpetuated the correct location of the northwest corner of Section 31.

Certificate of Location of Government Corner



SKETCH OF REFERENCE TIES
(NO SCALE)



Statement of evidence relative to this corner location on sheet 2

I hereby certify that this document was prepared by me or under my direct supervision.

Willard Pellinen

Willard Pellinen
McLeod County Surveyor
License No. 9626

Date 5/6/89

OFFICE OF THE COUNTY RECORDER
MCLEOD COUNTY, MINNESOTA.

I hereby certify that this document was filed in this office at 9 o'clock A.M. on the 19th day of May, 1989.

Carmen Pottier, County Recorder

By _____, Deputy

Document No. 228256

WEST QUARTER corner, Section 31, Township 117 North, Range 30 West

Certificate of Location of Government Corner

This corner was set by the government in 1855. John Ryan "set quarter section post in mound, pit and trench as per instructions with deposit of charcoal."

1973. Mr. Luthens, in Southwest Quarter of Section 31 and Frank Runke, in the Northeast Quarter of Section 36, 117, 31, don't know about corner but have always accepted the center line of the road and the field line running east as being on the section and quarter section lines.

On January 3, 1973, McCombs Knutson Associates (Dickman Knutson county surveyor) measured the west line of Section 31 and set a temporary quarter corner on the center line of the road in line with the field line east.

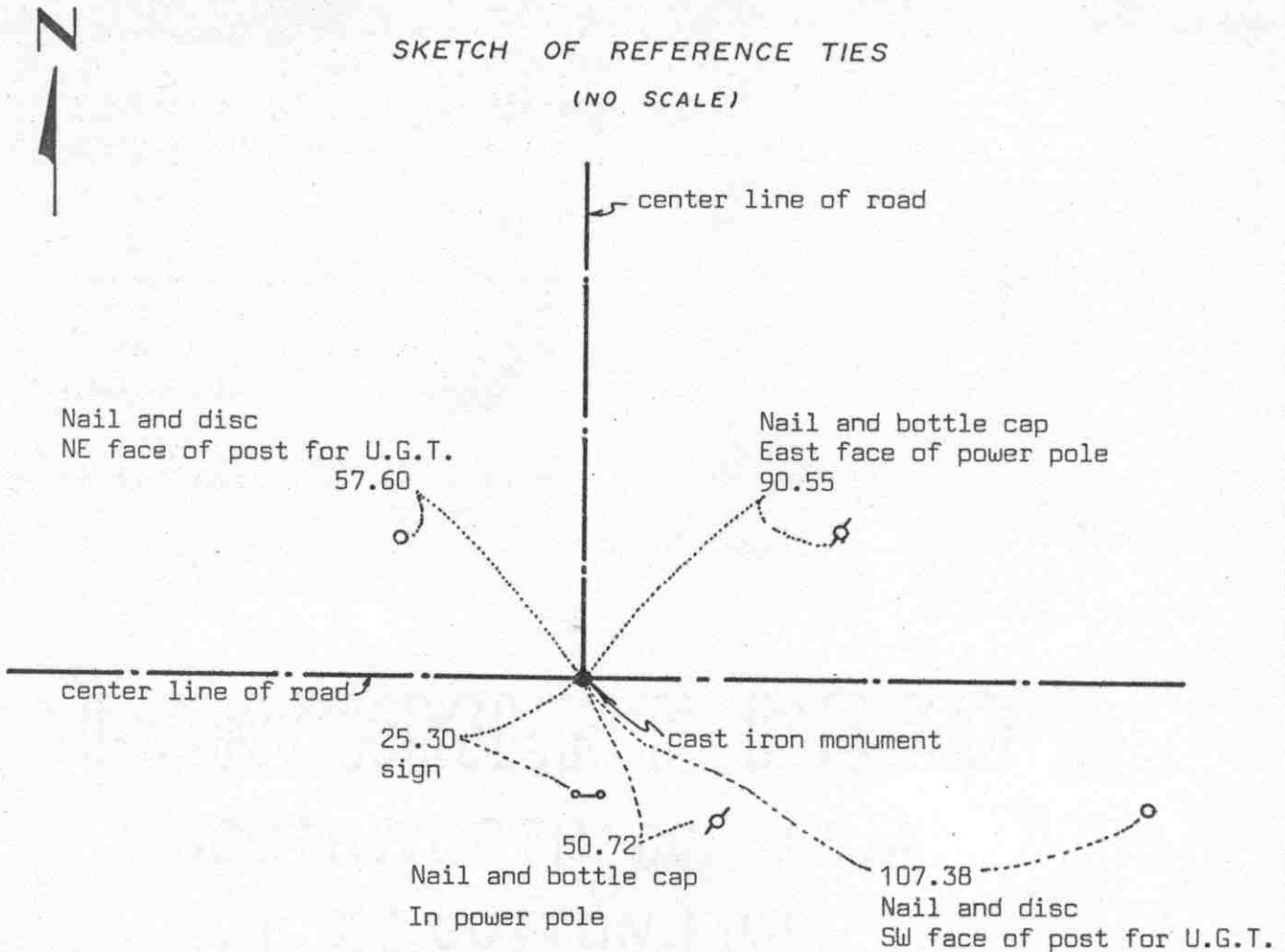
On July 23, 1973, they dug for the corner, John Tupa from Hutchinson with a backhoe, but found nothing. On November 6, 1974, they set a McLeod County cast iron monument at the corner. They took available reference ties.

On February 2, 1989, we found the monument in good condition and took new reference ties.

There being no evidence to the contrary, we have to accept the location of the cast iron monument as being the correct quarter corner.

Certificate of Location of Government Corner

SKETCH OF REFERENCE TIES
(NO SCALE)



Statement of evidence relative to this corner location on sheet 2

I hereby certify that this document was prepared by me or under my direct supervision.

Willard Pellinen

Willard Pellinen
McLeod County Surveyor
License No. 9626

Date 5/7/89

OFFICE OF THE COUNTY RECORDER
MCLEOD COUNTY, MINNESOTA.

I hereby certify that this document was filed in this office at 9 o'clock A.M. on the 19th day of May, 1989.

Carmen Estlie, County Recorder

By _____, Deputy

Document No. 228257

SOUTHWEST corner, Section 31, Township 117 North, Range 30 West

Certificate of Location of Government Corner

This corner was set by the government in 1855. John Ryan "set post, corner to T. 117 N., R. 30-31 W. of the 5th P.M., deposited charcoal, dug pits and trench, built mound and planted osage orange seeds at corners of mound."

1969. McCombs Knutson Associates (Dickman Knutson, County Surveyor) set this corner using information from old State Highway No. 7 right of way plans (now County Highway No. 14) which showed the corner to be on the center line - center line intersection.

1973. McCombs Knutson Associates dug for the corner, John Tupa from Hutchinson with a backhoe) but found nothing. They replaced the monument in the 1969 location and took reference ties.

On July 13, 1987, we took additional reference ties. Road to be regraded.

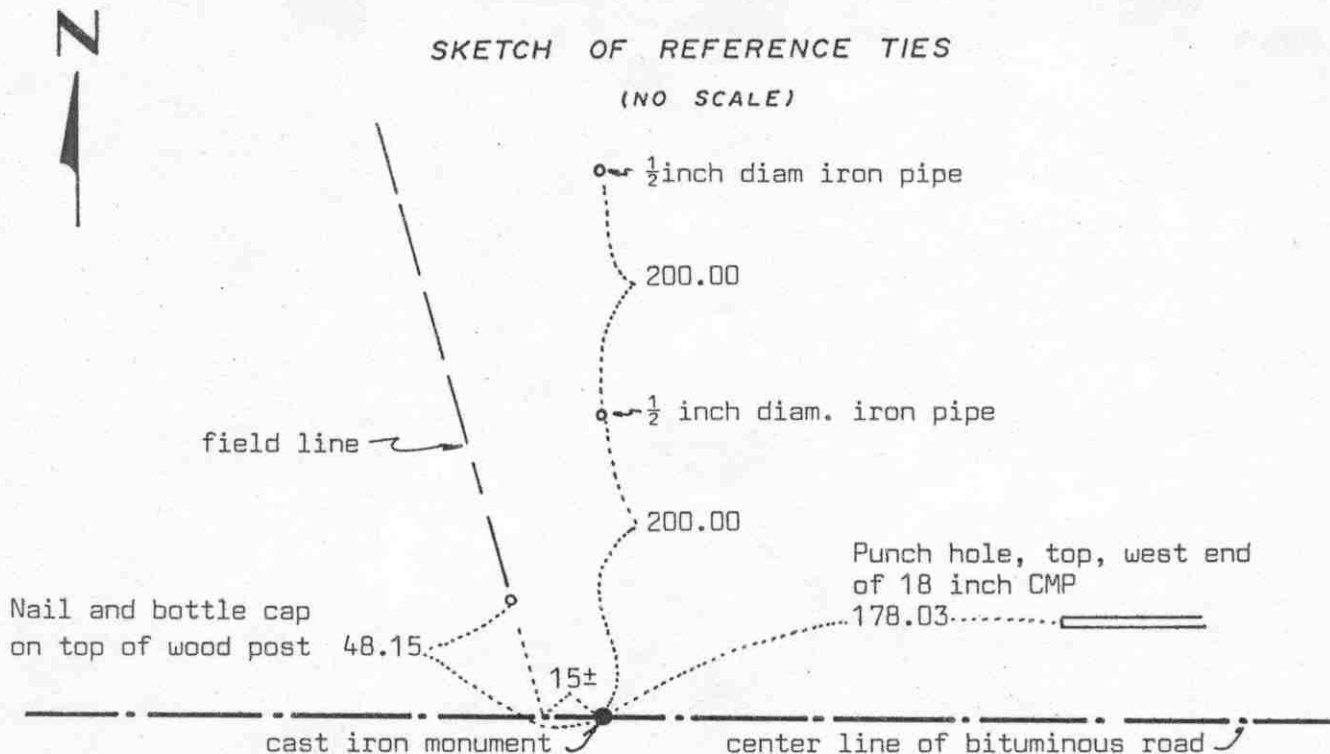
On February 14, 1989, we found the monument and reference ties good

We accept the location as set by McCombs as the correct location of the corner, the center line intersection having perpetuated the location.

Certificate of Location of Government Corner

SKETCH OF REFERENCE TIES

(NO SCALE)



Statement of evidence relative to this corner location on sheet 2

I hereby certify that this document was prepared by me or under my direct supervision.

Willard Pellinen
 Willard Pellinen
 McLeod County Surveyor
 License No. 9626

Date 7/23/89

OFFICE OF THE COUNTY RECORDER
 MCLEOD COUNTY, MINNESOTA.

I hereby certify that this document was filed in this office at 2 o'clock P.M. on the 27th day of July, 19 89.

Carmen Potlie, County Recorder
 By _____, Deputy

Document No. 229192

SOUTH QUARTER corner, Section 31, Township 117 North, Range 30 West

Certificate of Location of Government Corner

This corner was originally set by the General Land Office in 1855. John Ryan "set quarter section post, deposited charcoal, dug pits and trench, built mound and planted osage orange seeds at the corners of the mound."

On November 23, 1968, McCombs Knutson Associates (Dickman Knutson, county surveyor) measured the south line of Section 31 and found an iron pipe about 15 feet east of a field line running north. This pipe was very nearly half way between section corners and about 13 feet north of a straight line between the corners. Iron pipe was on the center line of the bituminous road. They set a McLeod County cast iron monument in place of the found iron pipe.

On July 13, 1987 we found the cast iron monument in good condition. We took extra reference ties. Monument and ties to be destroyed due to road construction.

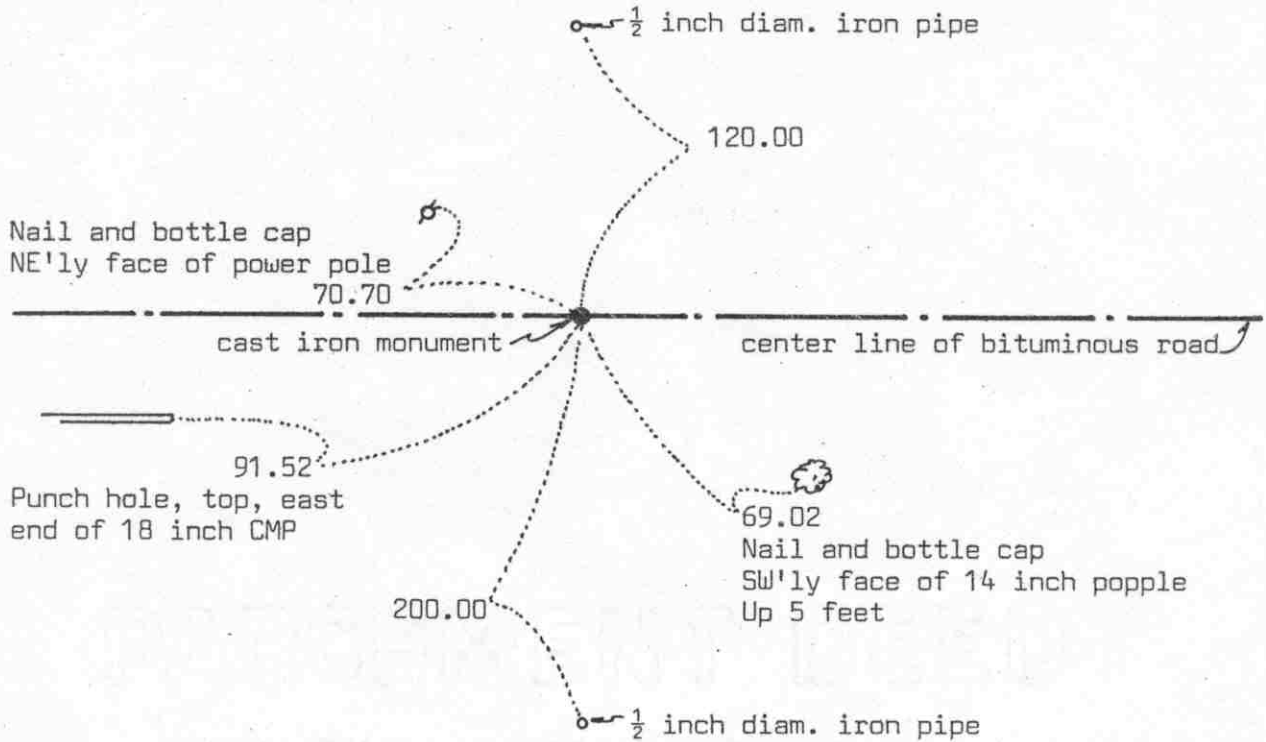
February 23, 1989. We reset a $\frac{1}{2}$ inch diameter iron pipe at the corner and took new reference ties.

We accept the iron pipe found by McCombs Knutson as having perpetuated the correct south quarter corner of section 31.

Certificate of Location of Government Corner



SKETCH OF REFERENCE TIES
(NO SCALE)



Statement of evidence relative to this corner location on sheet 2

I hereby certify that this document was prepared by me or under my direct supervision.

Willard Pellinen
Willard Pellinen
McLeod County Surveyor
License No. 9626
Date 7/23/89

OFFICE OF THE COUNTY RECORDER
MCLEOD COUNTY, MINNESOTA.

I hereby certify that this document was filed in this office at 2 o'clock P.M. on the 27th day of July, 19 89.

Carmen Cottler, County Recorder
By _____, Deputy

Document No. 229191

SOUTHEAST corner, Section 31, Township 117 North, Range 30 West

Certificate of Location of Government Corner

This corner was originally established by the Government Land Office in 1855. John Ryan "set post to sections 31 and 32, deposited charcoal, dug pits and trench, built mound and planted osage orange seeds at corners of mound.

On November 23, 1968, McCombs Knutson Associates (Dickman Knutson, county surveyor) measured the south line of sections 31 and 32 and set the southeast corner of Section 31 on the center line of the bituminous road, in line with a fence north. This was within 6 feet of the original government distance to the northeast corner of Section 6, T 116, R 30 and within 3 feet of being half way between the south quarter corner of Section 31 and the south quarter corner of Section 32. They set a McLeod County cast iron monument at the corner.

July 13, 1987. We found the cast iron monument in good condition and took additional ties to replace the corner after road construction. Monument and ties to be destroyed.

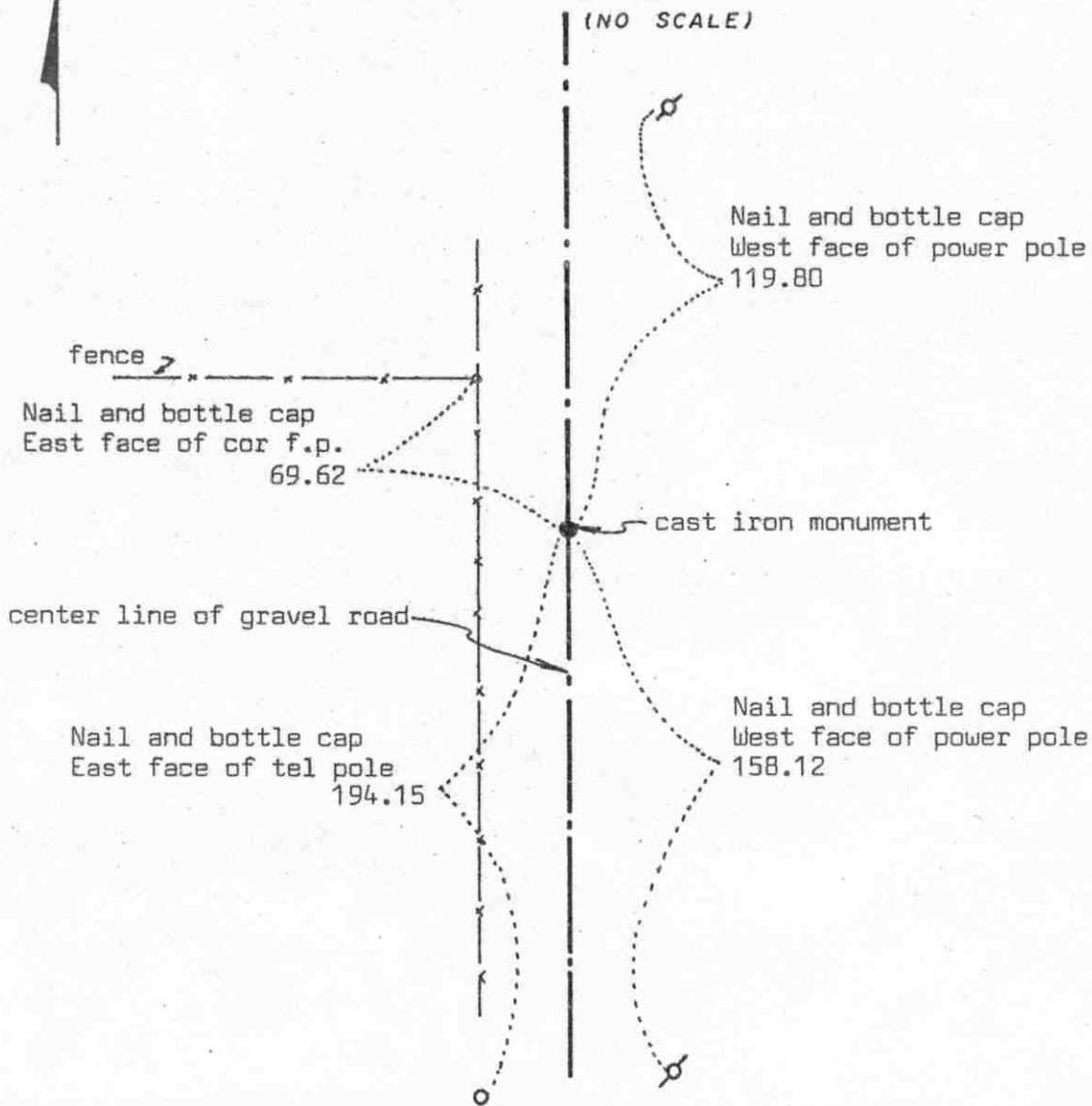
February 23, 1989. We reset the corner and took new reference ties. We set a $\frac{1}{2}$ inch diameter iron pipe flush with the surface.

Certificate of Location of Government Corner



SKETCH OF REFERENCE TIES

(NO SCALE)



Statement of evidence relative to this corner location on sheet 2

I hereby certify that this document was prepared by me or under my direct supervision.

Willard Pellinen
 Willard Pellinen
 McLeod County Surveyor
 License No. 9626
 Date 5/20/89

OFFICE OF THE COUNTY RECORDER
 MCLEOD COUNTY, MINNESOTA.

I hereby certify that this document was filed in this office at 9 o'clock A.M. on the 18th day of July, 1989.

Carmen Otlie, County Recorder
 By _____, Deputy
 Document No. 229066

EAST QUARTER corner, Section 32, Township 117 North, Range 30 West

Certificate of Location of Government Corner

This corner was originally set by the Government Land Office in 1856. D.L.Langton "set quarter section post, drove charred stake, raised mound of earth and planted locust seeds at corners of trench as per instructions."

December 10, 1979. We measured the east line of Section 32 and set a temporary quarter corner ($\frac{1}{2}$ inch iron pipe) on the center line of the road half way between section corners. No property lines running east or west from the quarter corner. A field line running west $\frac{1}{4}$ mile south falls $3\frac{1}{2}$ feet north of a split between our temporary corner and the southeast corner of the section. A field line running east $\frac{1}{4}$ mile south falls $10\frac{1}{2}$ feet too far north.

February 23, 1984. We checked occupation lines along the E-W quarter lines of Sections 32 and 33. Fence near center of Section 33 is 19 feet south of our line, and a fence $\frac{1}{4}$ mile east of the center falls within 2 feet of our line. Fence near center of Section 32 falls 5-6 feet south of our line and fence $\frac{1}{4}$ mile west of the center is on line.

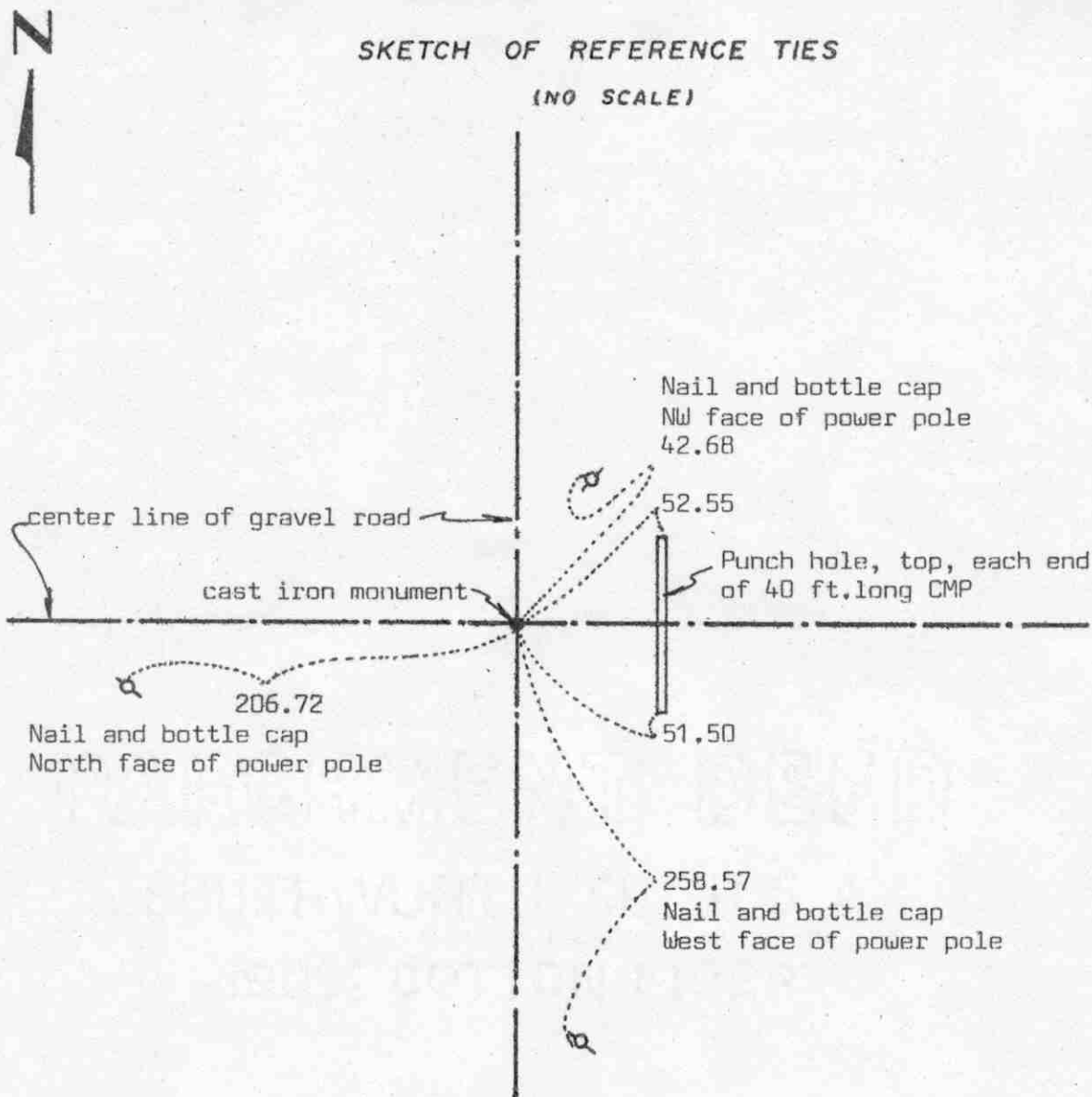
May 16, 1984. We set a McLeod County cast iron monument in place of our temporary corner and took new reference ties.

February 21, 1989. We found the monument in good condition and the reference ties good.

Certificate of Location of Government Corner

SKETCH OF REFERENCE TIES

(NO SCALE)



Statement of evidence relative to this corner location on sheet 2

I hereby certify that this document was prepared by me or under my direct supervision.

Willard Pellinen

Willard Pellinen
McLeod County Surveyor
License No. 9626

Date 3/23/89

OFFICE OF THE COUNTY RECORDER
MCLEOD COUNTY, MINNESOTA.

I hereby certify that this document was filed in this office at 3 o'clock P.M. on the 6th day of April, 1989.

Carmen Potlie, County Recorder
By _____, Deputy

Document No. 227624

Certificate of Location of Government Corner

This corner was originally set in 1856 by D.L.Langton of the Government Land Office.

1920 survey notes by E.L.Higgins show a distance of 2630.7 feet to the east quarter corner of Section 29, but he said he couldn't locate the corner because it was in a marsh below 30 inches of water.

1921 survey by E.L.Higgins had a distance of 2647.4 feet to the north quarter corner of Section 33.

September 19, 1978, we found a spike down 1 foot below the surface of the road.

On September 28, 1978, we dug for the corner and found a stone (below the spike found before) down 3 feet below the road surface.

On June 29, we set a cast iron monument at the corner and took available ties.

On July 1, 1988, we found no reference ties remaining. We found the cast iron monument down 4 inches below the road surface in good condition and took new reference ties.

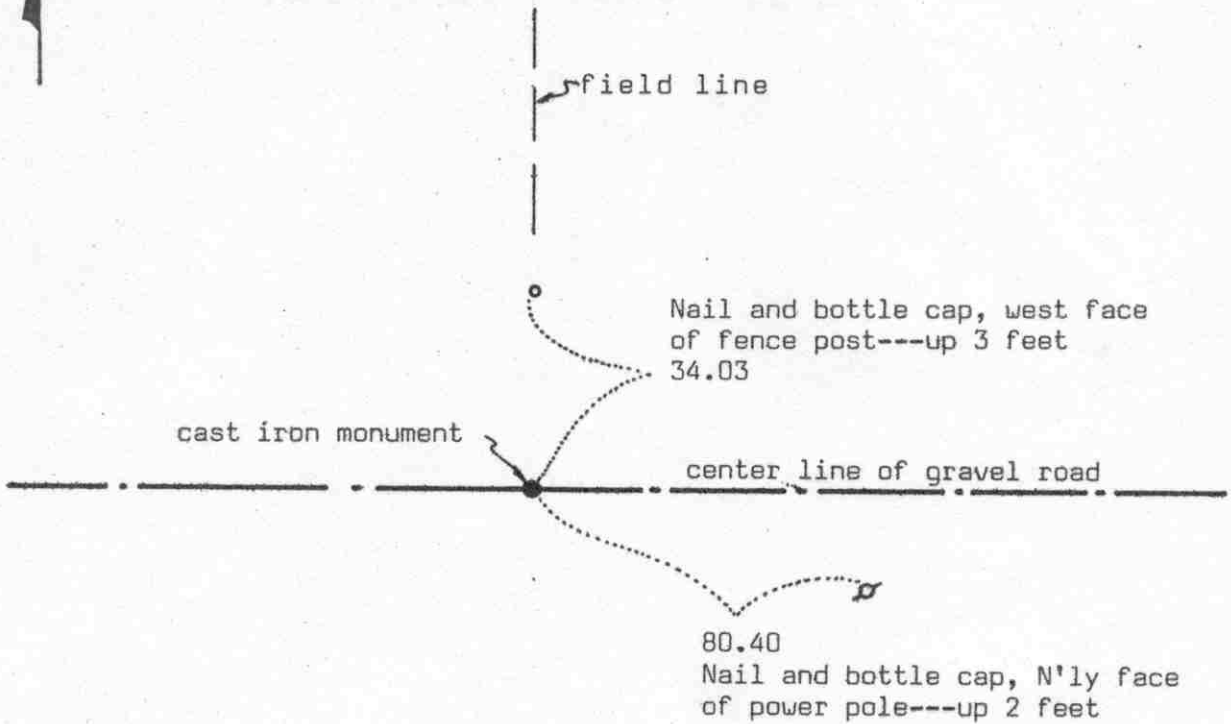
Our measured distance to the east quarter corner of Section 29 is 2632.95 compared with 1920 distance of 2630.7. Our distance of the north quarter corner of Section 33 is 2647.06 compared with 1921 distance of 2647.4 feet.

We feel the found spike and stone have perpetuated the true northeast corner of Section 32.

Certificate of Location of Government Corner



SKETCH OF REFERENCE TIES
(NO SCALE)



Statement of evidence relative to this corner location on sheet 2

I hereby certify that this document was prepared by me or under my direct supervision.

Willard Pellinen
Willard Pellinen
McLeod County Surveyor
License No. 9626
Date 3/25/89

OFFICE OF THE COUNTY RECORDER
MCLEOD COUNTY, MINNESOTA.

I hereby certify that this document was filed in this office at 3 o'clock P.M. on the 6th day of April, 1989.

Armin Dotlic, County Recorder
By _____, Deputy

Document No. 227625

Certificate of Location of Government Corner

This corner was originally set by D.L.Langton of the Government Office in 1856. He "set quarter section post, drove charred stake, raised mound of earth and planted locust seeds at the corners of the trench as per instructions."

In June, 1979, we dug for the corner with a backhoe at the center line of the road in line with a fence running north, but found nothing.

On December 10, 1979, we measured the north line of Section 32 and set an iron pipe at the center line in line with the fence north and took reference ties.

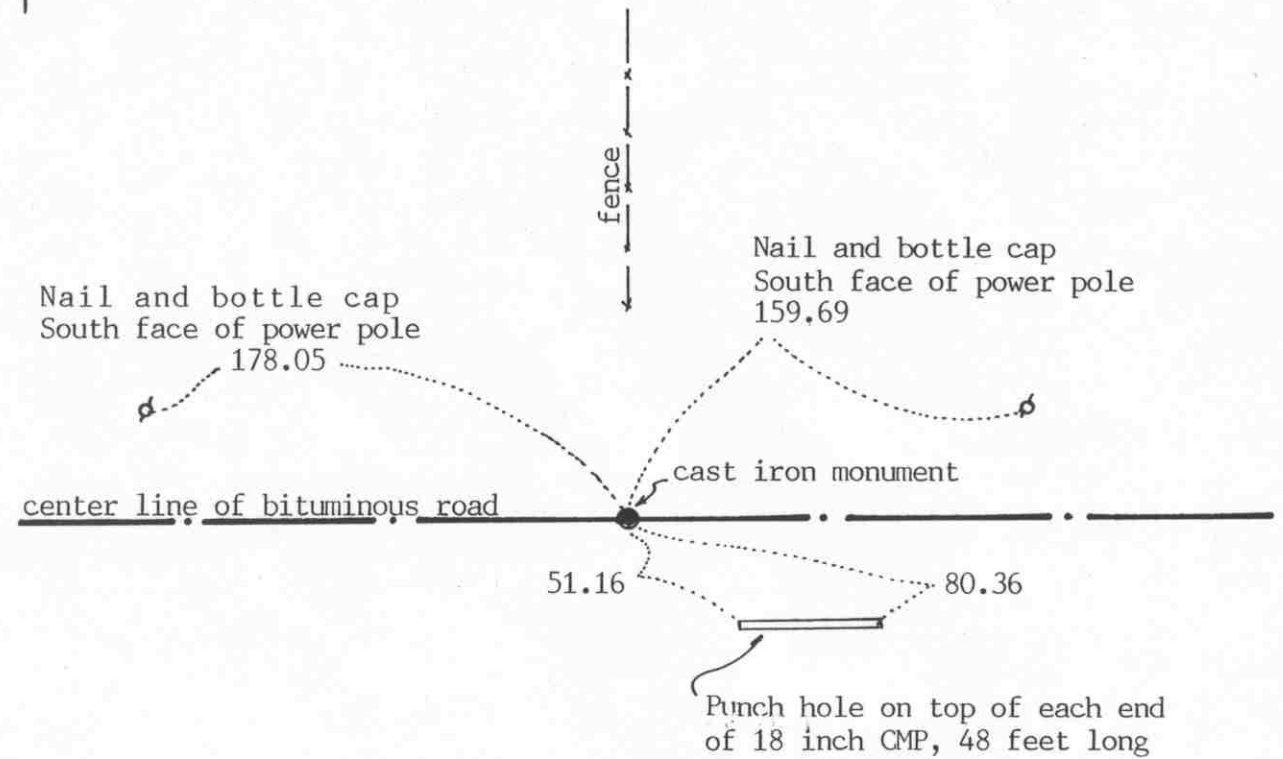
On November 28, 1982, Harlan (father) and Sherwood (son) Dummer, who have lived in the East Half of Section 29 for 15 years both said that the field line running north (old fence had been removed) has been accepted as the correct quarter line. One fence post remains, which was the south end of the fence. We set a McLeod County cast iron monument at the location of the iron pipe which we set in 1979 and took new reference ties.

On July 1, 1988, we found the monument in good condition and the reference ties good.

We feel this was an obliterated corner whose location has been perpetuated by the center line of the road and the old fence running north.

Certificate of Location of Government Corner

SKETCH OF REFERENCE TIES (NO SCALE)



Statement of evidence relative to this corner location on sheet 2

I hereby certify that this document was prepared by me or under my direct supervision.

Willard Pellinen
Willard Pellinen
McLeod County Surveyor
License No. 9626

Date January 1, 1993

OFFICE OF THE COUNTY RECORDER
MCLEOD COUNTY, MINNESOTA.

I hereby certify that this document was filed in this office at 9 o'clock A.M. on the 6th day of January, 1993.

Carmen O'Brien Gilder, County Recorder

By _____, Deputy

Document No. 249904

Certificate of Location of Government Corner

August, 1855. This corner was originally established by the General Land Office. John Ryan set a post, deposited charcoal, dug pits and trench, built mound and planted osage orange seeds at the corners of the mound.

November 21, 1968. McCombs Knutson Associates (Dickman Knutson, county surveyor) found an iron pin on the center line of the east-west road in line with a fence to the north.

Knutson replaced the iron pin with a McLeod County cast iron monument and took available reference ties.

November 10, 1987. We found the monument in good condition down 3 inches below the bituminous road surface. All the old ties had been destroyed so we took new reference ties.

The monument set by Knutson is accepted as marking the quarter corner. It fits occupation lines, the center line of the road and the fence and it perpetuates the location of an older monument.

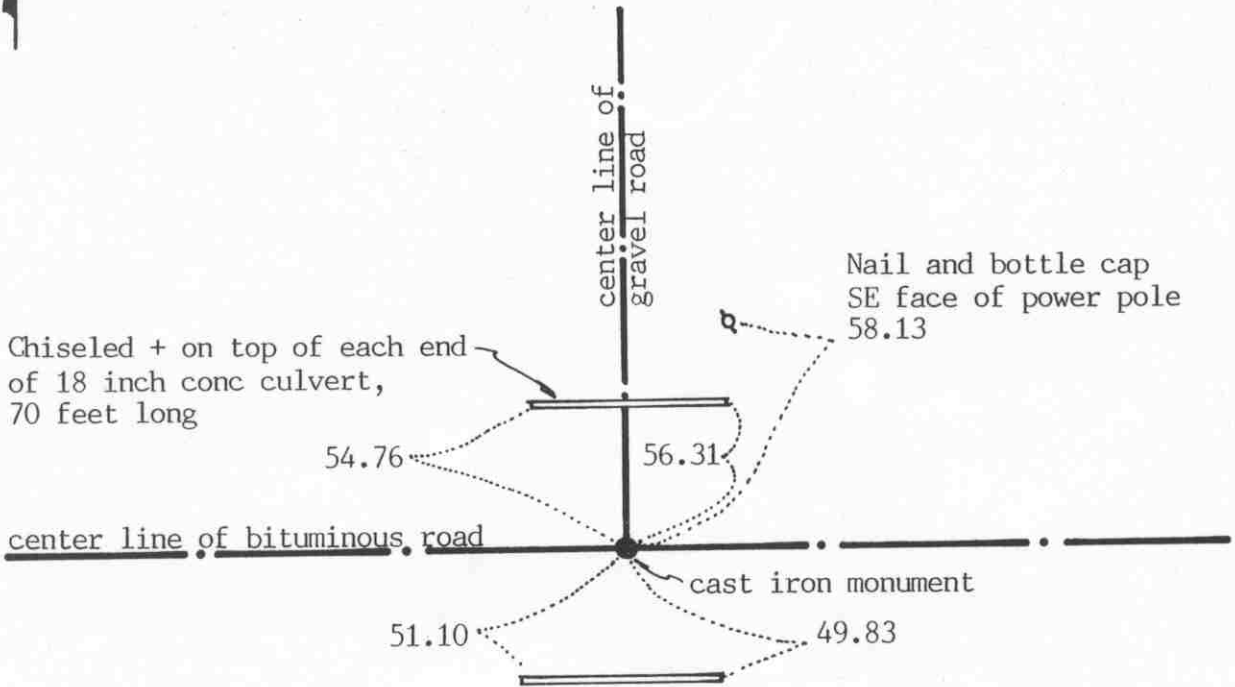
December 1, 1992. We found the monument in good condition and checked the reference ties.

SOUTHEAST corner, Section 32, Township 117 North, Range 30 West

Certificate of Location of Government Corner



SKETCH OF REFERENCE TIES (NO SCALE)



Punch hole on top of each end of 15 inch CMP, 44 feet long

Statement of evidence relative to this corner location on sheet 2

I hereby certify that this document was prepared by me or under my direct supervision.

Willard Pellinen

Willard Pellinen
McLeod County Surveyor
License No. 9626

Date January 1, 1993

OFFICE OF THE COUNTY RECORDER
MCLEOD COUNTY, MINNESOTA.

I hereby certify that this document was filed in this office at 9 o'clock A.M. on the 6th day of January, 19 93.

Carmen Helio Mulder, County Recorder

By _____, Deputy

Document No. 249903

SOUTHEAST _____ corner, Section 32, Township 117 North, Range 30 West

Certificate of Location of Government Corner

1855. John Ryan of the General Land Office originally established this corner. He set a post, deposited charcoal, dug pits and trench, built mound and planted osage orange seeds at the corners of the mound.

November 21, 1968. McCombs Knutson Associates (Dickman Knutson, county surveyor) found an iron pipe at the center line intersection of the roads. Roads east-west and north. They took available reference ties.

Knutson replaced the iron pipe with a McLeod County cast iron monument.

November 6, 1987. We found no ties remaining. We found the monument in good condition down 4 inches below the bituminous surface and took new reference ties.

December 1, 1992. We found the cast iron monument in good condition and checked the reference ties.

Certificate of Location of Government Corner



SKETCH OF REFERENCE TIES

(NO SCALE)

center line of gravel road

Nail and disc on N'ly side of triple 24 inch to 32 inch cottonwood 6.71

field line

cast iron monument

4.81

10±

Nail and bottle cap
South side of twin
24 and 32 inch cottonwood

Statement of evidence relative to this corner location on sheet 2

I hereby certify that this document was prepared by me or under my direct supervision.

Willard Pellinen

Willard Pellinen
McLeod County Surveyor
License No. 9626

Date 7/24/89

OFFICE OF THE COUNTY RECORDER
MCLEOD COUNTY, MINNESOTA.

I hereby certify that this document was filed in this office at 2 o'clock P.M. on the 27th day of July, 19 89.

Carmen Pollock, County Recorder

By _____, Deputy

Document No. 229193

EAST QUARTER corner, Section 33, Township 117 North, Range 30 West

Certificate of Location of Government Corner

This corner was set in 1856 by the Government Land Office. D.L.Langton "set quarter section post, drove charred stake, raised mound of earth and planted locust seeds at the corners of the trench as per instructions."

In 1976, the D.N.R. found a 1 inch diameter iron pipe in line with an old road running north and in line with a field line running east.

Mrs. Ed Karg, who has lived in the Northeast Quarter of Section 33 all her life said there used to be a fence running west from a large cottonwood and the quarter corner is near the cottonwood. Mr. Russel Laraway, in the Southeast Quarter of Section 33 agrees.

On June 28, 1979, we replaced the iron pipe with a McLeod County cast iron monument, and took reference ties.

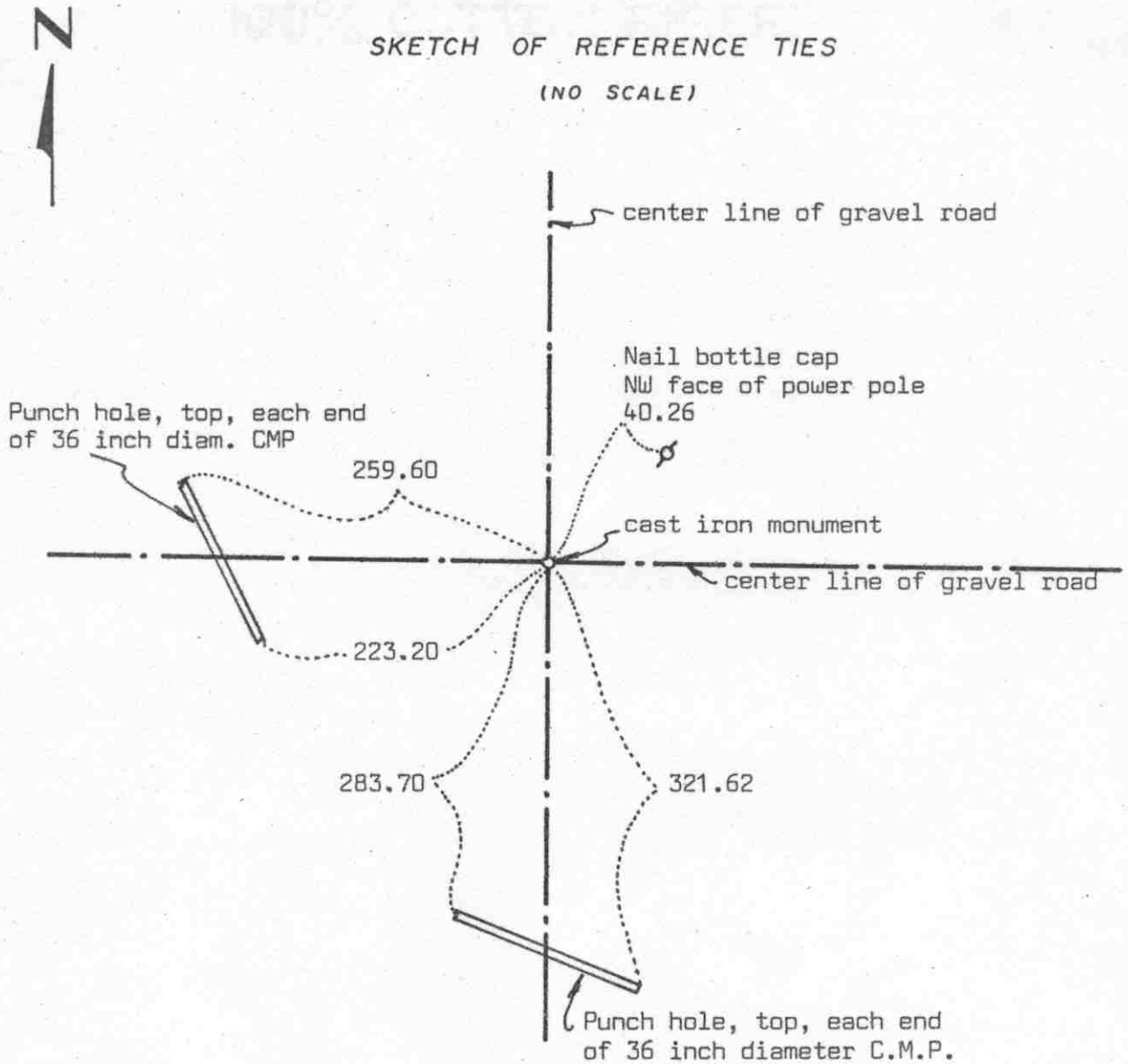
February 23, 1989. We found the cast iron monument in good condition and the reference ties o.k.

We don't know who and when the iron pipe was set but there being no evidence to the contrary, we must accept this location as the correct quarter corner. This corner falls within 4 feet of being half way between section corners.

Certificate of Location of Government Corner

SKETCH OF REFERENCE TIES

(NO SCALE)



Statement of evidence relative to this corner location on sheet 2

I hereby certify that this document was prepared by me or under my direct supervision.

Willard Pellinen
 Willard Pellinen
 McLeod County Surveyor
 License No. 9626
 Date 3/24/89

OFFICE OF THE COUNTY RECORDER
 MCLEOD COUNTY, MINNESOTA.

I hereby certify that this document was filed in this office at 3 o'clock P.M. on the 6th day of April, 19 89.

Carmen Ostlie, County Recorder
 By _____, Deputy

Document No. 227626

Certificate of Location of Government Corner

This corner was originally established by D.L.Langton of the Government Land Office in 1856. He "set post to Sections 27, 28, 33 and 34, drove charred stake, raised mound of earth and planted locust seeds at the corners of trench as per instructions."

In 1921, E.L.Higgins found a stone (at crossroads) and his notes show a distance of 2637.50 feet to the east quarter corner of Section 28.

In October, 1973, we dug for the corner and found a stone and a wood stake, and set a McLeod County cast iron monument. We measured 2637.69 feet to the east quarter corner of Section 28.

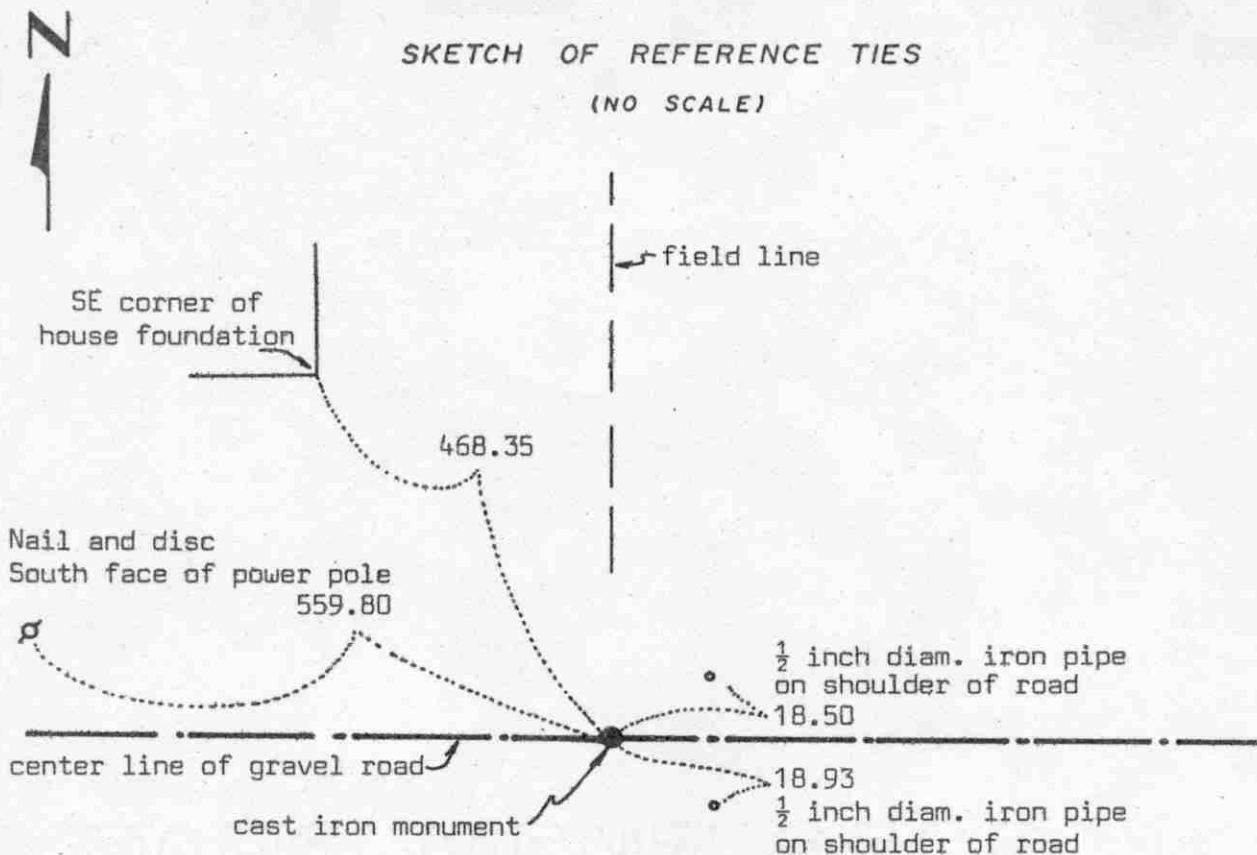
On July 1, 1988, we found the monument in good condition and the reference ties good.

We feel the stone we found was the same stone shown in the field notes by Higgins in 1921.

Certificate of Location of Government Corner

SKETCH OF REFERENCE TIES

(NO SCALE)



Statement of evidence relative to this corner location on sheet 2

I hereby certify that this document was prepared by me or under my direct supervision.

Willard Pellinen
 Willard Pellinen
 McLeod County Surveyor
 License No. 9626
 Date 3/23/89

OFFICE OF THE COUNTY RECORDER
 MCLEOD COUNTY, MINNESOTA.

I hereby certify that this document was filed in this office at 2 o'clock P.M. on the 30th day of March, 1989.

Carmin Ostlie, County Recorder
 By _____, Deputy

Document No. 227495

NORTH QUARTER corner, Section 33, Township 117 North, Range 30 West

Certificate of Location of Government Corner

This corner was established in 1856 by D.L.Langton of the Government Land Office. He "set quarter section post, drove charred stake, raised mound of earth and planted locust seeds at corners of trench as per instructions."

1921 survey by E.L.Higgins shows a distance of 2607.4 feet to the northeast corner of Section 33, with a question mark after the distance and a note saying the distance should be 2614 feet. He had a total distance for the north line of Section 28 of 5261.4 feet.

In October, 1973, we found an iron stake down 3 feet below the road surface at the center line of the road and in line with a field line north. Walter Warnke, in the Southwest Quarter of Section 28, says this is the correct corner. We set a McLeod County cast iron monument at the location of the found iron stake. We measured 2614.24 feet to the northeast corner of Section 28 and 2647.15 feet to the northwest corner.

On July 1, 1988, we found the monument in good condition 4 inches below the road surface and took new reference ties.

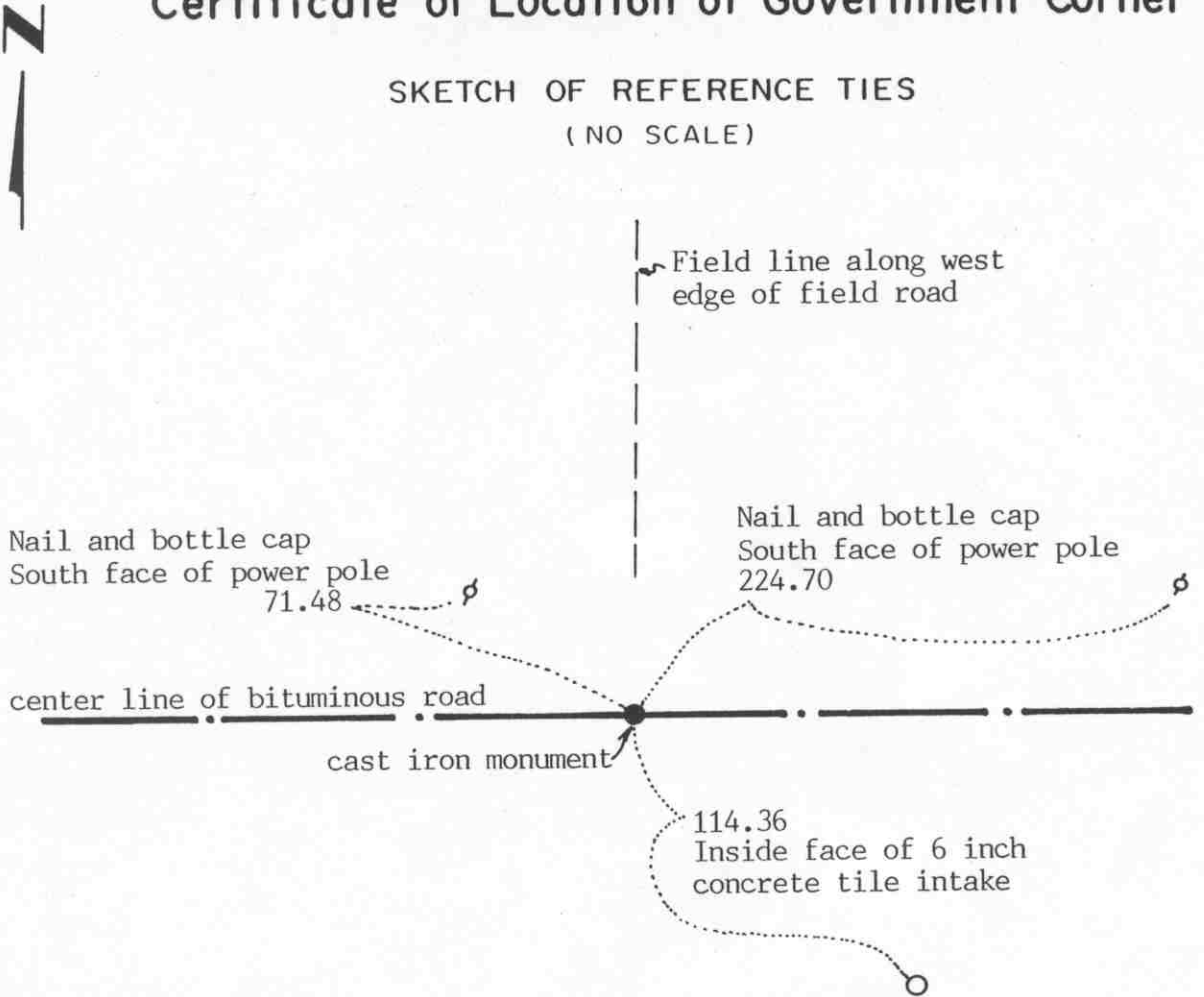
We feel the found iron stake has perpetuated the correct location of the quarter corner.

SOUTH QUARTER corner, Section 33, Township 117 North, Range 30 West

Certificate of Location of Government Corner

SKETCH OF REFERENCE TIES

(NO SCALE)



Statement of evidence relative to this corner location on sheet 2

I hereby certify that this document was prepared by me or under my direct supervision.

Willard Pellinen
Willard Pellinen
McLeod County Surveyor
License No. 9626

Date January 1, 1992

OFFICE OF THE COUNTY RECORDER
MCLEOD COUNTY, MINNESOTA.

I hereby certify that this document was filed in this office at 9 o'clock A. M. on the 6th day of January, 1993.

Carroll H. West, County Recorder

By _____, Deputy

Document No. 249906

SOUTH QUARTER corner, Section 33, Township 117 North, Range 30 West

Certificate of Location of Government Corner

August, 1855. This corner was originally established by the General Land Office. John Ryan set a post, deposited charcoal, dug pits and trench, built mound and planted osage orange seeds at the corners of the mound.

May, 1969. McCombs Knutson Associates (Dickman Knutson, county surveyor) found an iron pin on the center line of the east-west road on the southerly extension of the west edge of a field road running north. Mr. Fred Sitz, in the Southeast Quarter of Section 33, agrees this is the correct location of the corner. He said the field road is all in the Southeast Quarter. Knutson set a cast iron monument.

November 6, 1987. We found no old reference ties remaining. We found the cast iron monument in good condition down 3 inches below the bituminous surface of the road and took new available reference ties. This corner is 15.92 feet east and 0.32 feet south of being on line and split between the section corners.

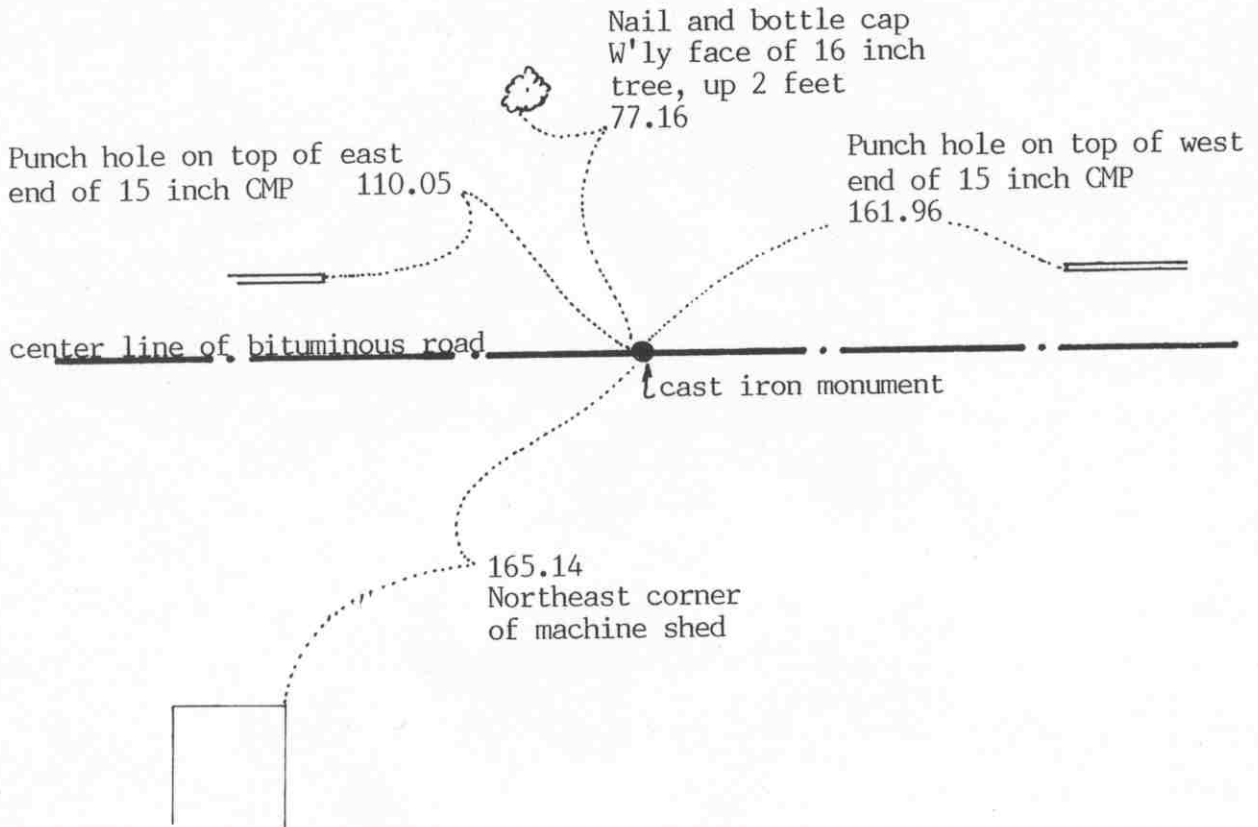
December 1, 1992. We found the monument in good condition and checked the reference ties.

The monument set by Knutson is accepted as the correct location of the quarter corner. It fits occupation lines, the center line of the east-west road and the field line to the north and it perpetuates the location of an older monument.

SOUTHEAST corner, Section 33, Township 117 North, Range 30 West

Certificate of Location of Government Corner

SKETCH OF REFERENCE TIES (NO SCALE)



Statement of evidence relative to this corner location on sheet 2

I hereby certify that this document was prepared by me or under my direct supervision.

Willard Pellinen
Willard Pellinen
McLeod County Surveyor
License No. 9626

Date January 1, 1993

OFFICE OF THE COUNTY RECORDER
MCLEOD COUNTY, MINNESOTA.

I hereby certify that this document was filed in this office at 9 o'clock A.M. on the 6th day of January, 1993.

Carmen Ostlie Mulder County Recorder

By _____, Deputy

Document No. 249905

SOUTHEAST corner, Section 33, Township 117 North, Range 30 West

Certificate of Location of Government Corner

1855. This corner was originally established by the General Land Office. John Ryan set a post and deposited charcoal, dug pits and trench, built mound and planted osage orange seeds at the corners of the mound.

November, 1968. McCombs Knutson Associates (Dickman Knutson, county surveyor) found an iron pin on the center line of the east-west road within $\frac{1}{2}$ foot of being half way between the south quarter corner of Section 33 and the south quarter corner of Section 34.

Knutson replaced the iron pin with a McLeod County cast iron monument and took available reference ties.

November 6, 1987. We found the monument in good condition and took new reference ties. All the old ties had been destroyed.

December 1, 1992. We found the monument in good condition and checked the reference ties.

The monument set by Knutson is accepted as marking the section corner. It fits an occupation line, the center line of the east-west road and it perpetuates the location of an older monument.

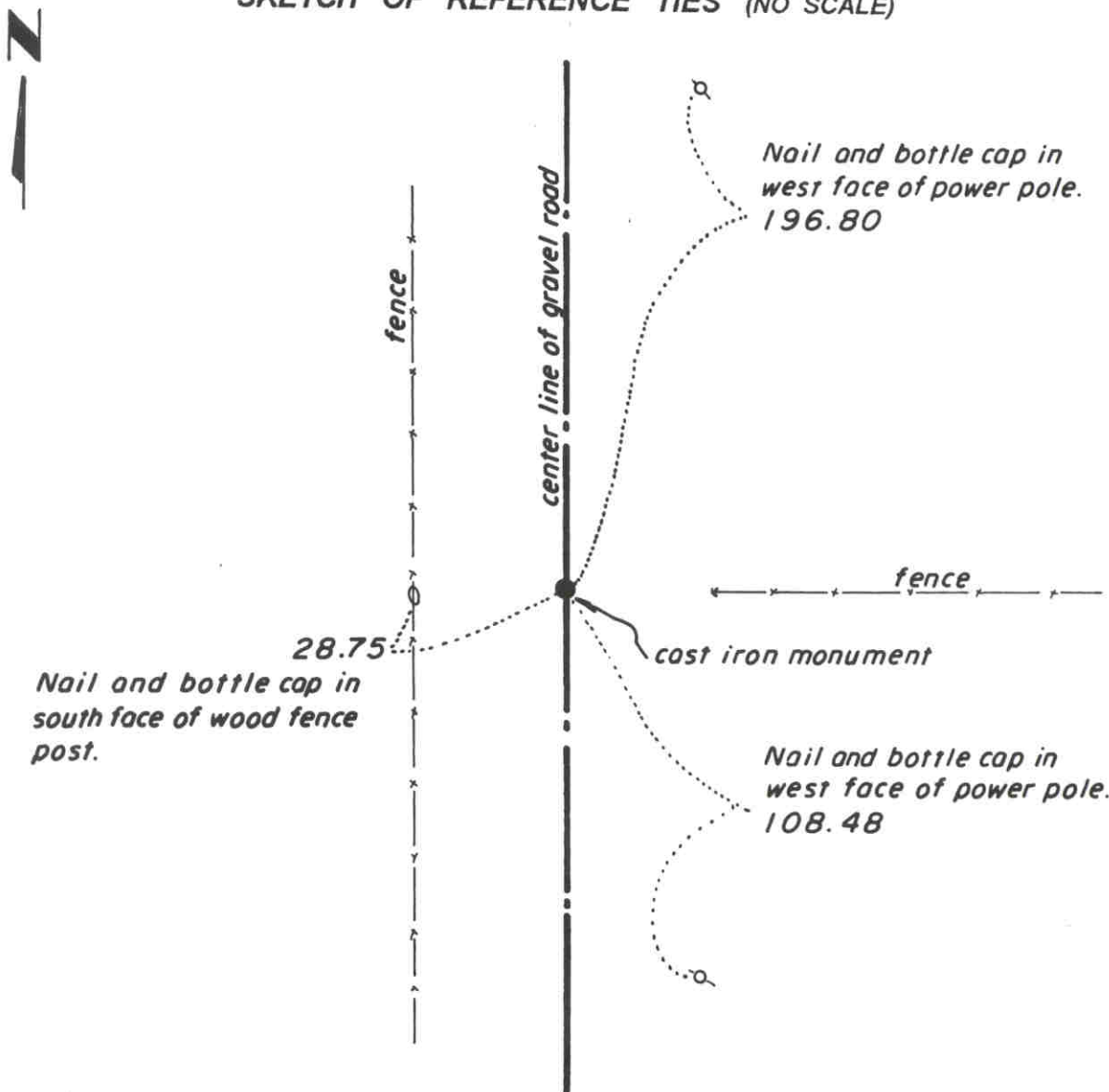
Certificate of Location of Government Corner

East Quarter corner, Section 34, Township 117 North, Range 30 West

SKETCH OF REFERENCE TIES (NO SCALE)

SECTION 34

SECTION 35



Statement of evidence relative to this corner location on sheet 2

I hereby certify that this document was prepared by me or under my direct supervision.

Willard Pellinen
 Willard Pellinen
 McLeod County Surveyor
 License No. 9626.

Date June 9, 1995

**OFFICE OF THE COUNTY RECORDER
 MCLEOD COUNTY, MINNESOTA**

I hereby certify that this document was filed in this office at 2 o'clock P. M. on the 13th day of June 19 95.

CARMEN OSTLIE MULLER, MCLEOD COUNTY RECORDER, County Recorder

By Phyllis Sopsowiak, Deputy.

Document No. 266262

Certificate of Location of Government Corner
East Quarter Corner, Section 34, Township 117 North, Range 30 West

1856. D. L. Langton of the General Land Office established this corner. He set a post, drove a charred stake, dug trench and pits and planted locust seeds at the corners of the trench.

1971. Adjoining land owners say the corner is the center line of the road in line with a fence to the east.

October 25, 1971. Dickman Knutson, county surveyor, excavated for the corner. (John Tupa from Hutchinson with a backhoe) Down 2 1/2 feet below the surface of the gravel road they found a stone with a sharp point on the top side. They took reference ties.

November 2, 1971. Knutson set a McLeod County cast iron monument and took additional ties.

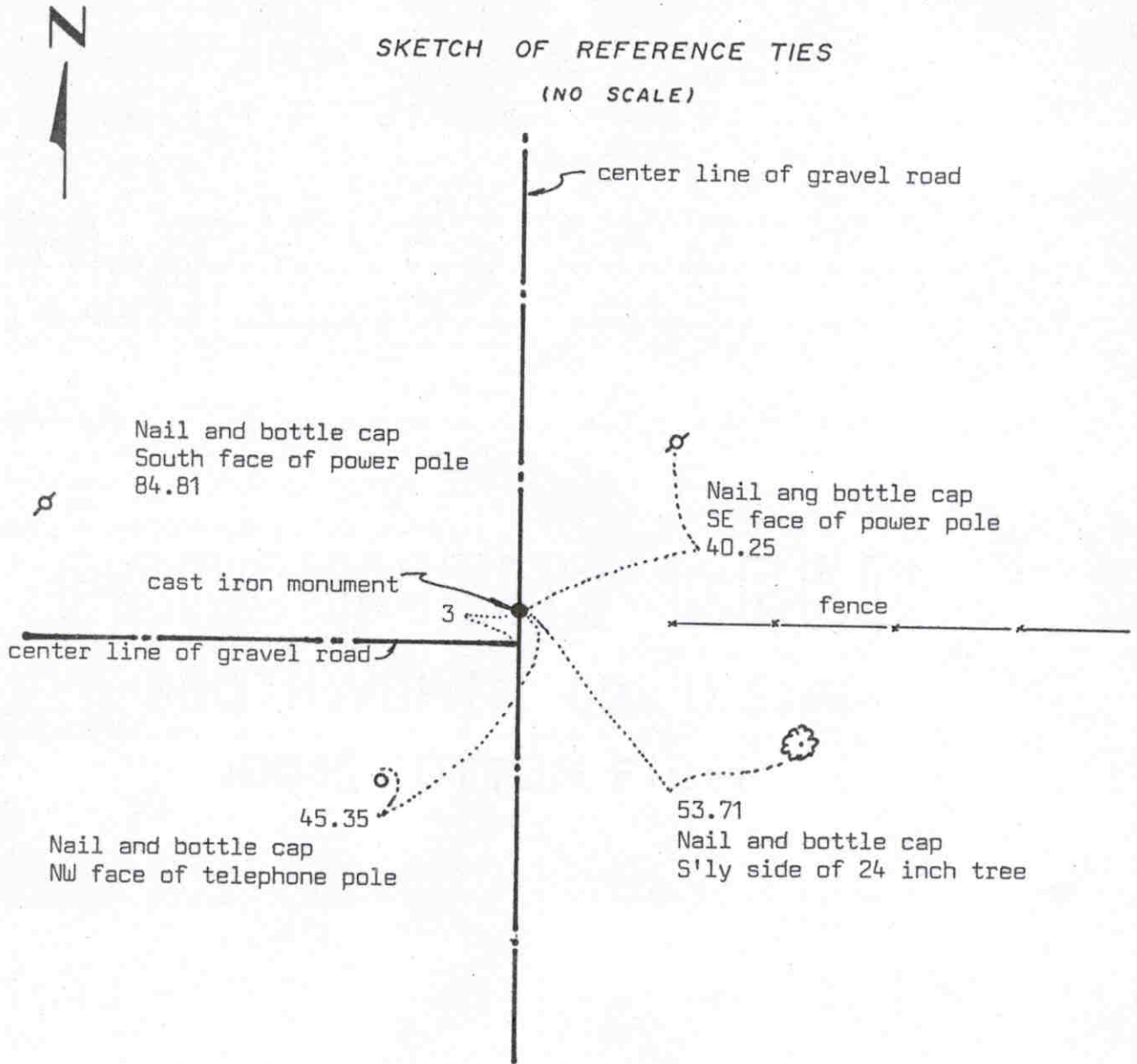
January 22, 1987. We found the monument in good condition and took new available reference ties.

March, 1995. The monument set by Knutson is accepted as marking the correct location of the government corner. It fits long standing occupation lines, the center line of the north-south road and the fence to the east.

Certificate of Location of Government Corner

SKETCH OF REFERENCE TIES

(NO SCALE)



Statement of evidence relative to this corner location on sheet 2

I hereby certify that this document was prepared by me or under my direct supervision.

Willard Pellinen

Willard Pellinen
McLeod County Surveyor
License No. 9626

Date 5/13/89

OFFICE OF THE COUNTY RECORDER
MCLEOD COUNTY, MINNESOTA.

I hereby certify that this document was filed in this office at 9 o'clock A.M. on the 19th day of May, 1989.

Carmen Ostlie, County Recorder

By _____, Deputy

Document No. 228258

NORTHEAST corner, Section 34, Township 117 North, Range 30 West

Certificate of Location of Government Corner

This corner was originally set by the government in 1856. D.L.Langton "set post to sections 26,27,34 and 35, drove charred stake, raised mound of earth, planted locust seeds at corners of trench as per instructions."

On October 15, 1971, we dug for the corner at the center line intersection of the gravel roads, John Tupa from Hutchinson with a backhoe. We found a stone and iron stake down 3 feet below the road surface. We took reference ties.

On November 2, 1971, we set a McLeod County cast iron monument.

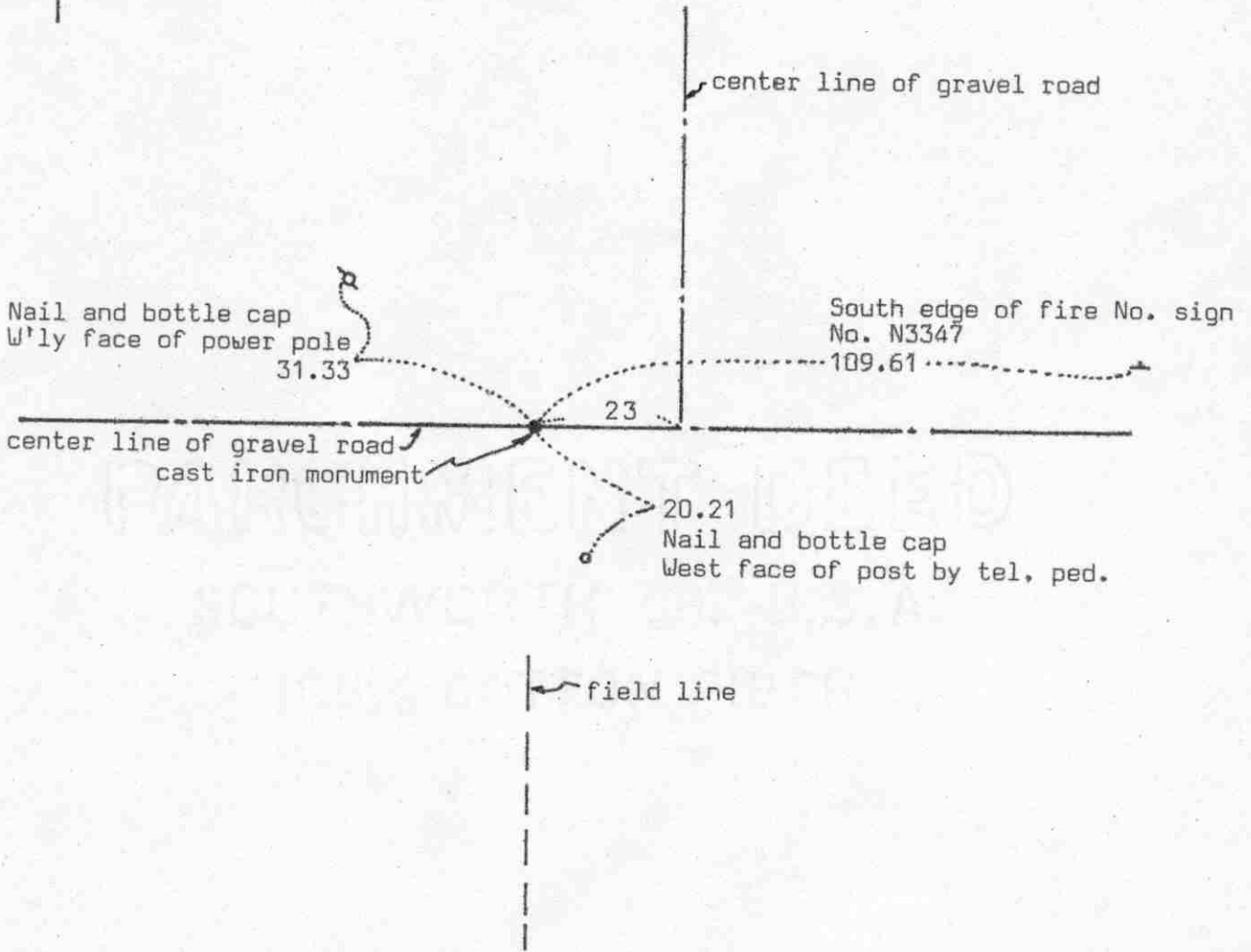
On February 14, 1989, we found the cast iron monument in good condition and took new reference ties.

We don't know who set the stone and iron stake, but there being no evidence to the contrary, we accept it as having perpetuated the correct location of the section corner.

Certificate of Location of Government Corner



SKETCH OF REFERENCE TIES
(NO SCALE)



Statement of evidence relative to this corner location on sheet 2

I hereby certify that this document was prepared by me or under my direct supervision.

Willard Pellinen
Willard Pellinen
McLeod County Surveyor
License No. 9626

Date 3/25/89

OFFICE OF THE COUNTY RECORDER
MCLEOD COUNTY, MINNESOTA.

I hereby certify that this document was filed in this office at 2 o'clock P.M. on the 6th day of April, 19 89.

Carman Ostlie, County Recorder
By _____, Deputy

Document No. 227627

NORTH QUARTER corner, Section 34, Township 117 North, Range 30 West

Certificate of Location of Government Corner

This corner was set by D.L.Langton of the Government Land Office in 1856. He "set quarter section post, raised mound of earth, drove charred stake and planted locust seeds at the corners of the trench as per instructions."

On June 14, 1967, we set an iron pipe in the center line of the gravel road in line with the south quarter corner and a 48 inch cottonwood which was on the north-south quarter line according to Mr. Alfred Prieve, in the NE $\frac{1}{4}$ of Section 34 and Mr. Arthur Nisse, in the SE $\frac{1}{4}$ of Section 27. We took reference ties.

In June, 1971, we dug for the corner and found a stone, over a wood stake, down in the original ground below the road surface. This stone was within $\frac{1}{2}$ foot of being in the same location as our iron pipe which was set in 1967. We set a McLeod County cast iron monument and took new reference ties.

On February 24, 1986, we found only 1 reference tie remaining. We found the monument down 3 inches below the road surface in good condition and took new reference ties.

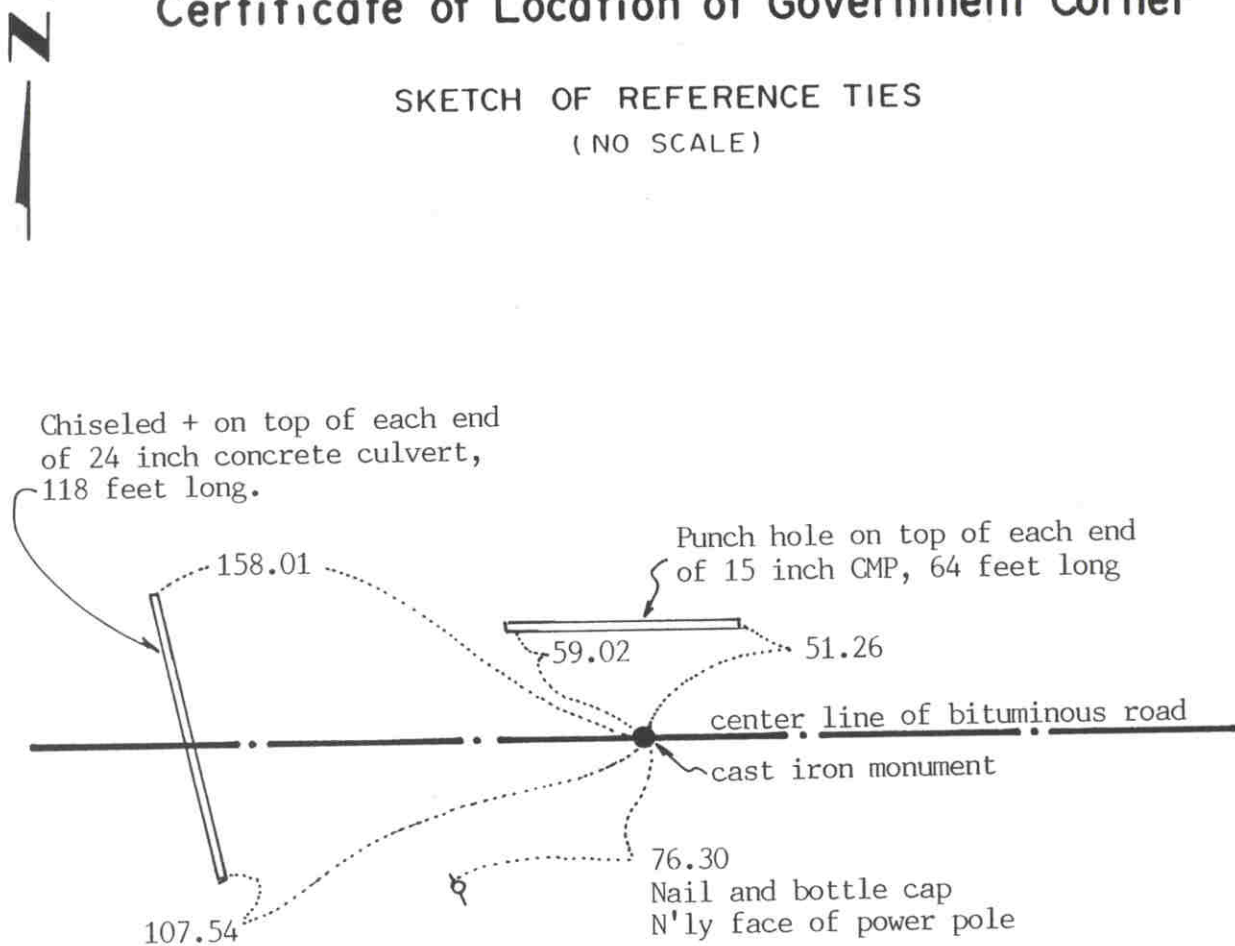
On July 1, 1988, we found the monument in good condition and the reference ties good.

We feel the stone we found in 1971 had perpetuated the true location of the quarter corner.

SOUTH QUARTER corner, Section 34, Township 117 North, Range 30 West

Certificate of Location of Government Corner

SKETCH OF REFERENCE TIES (NO SCALE)



Statement of evidence relative to this corner location on sheet 2

I hereby certify that this document was prepared by me or under my direct supervision.

Willard Pellinen
Willard Pellinen
McLeod County Surveyor
License No. 9626

Date January 1, 1993

OFFICE OF THE COUNTY RECORDER
MCLEOD COUNTY, MINNESOTA.

I hereby certify that this document was filed in this office at 9 o'clock A.M. on the 6th day of January, 1993.

Carmen O'Brien-Jude, County Recorder

By _____, Deputy

Document No. **249907**

SOUTH QUARTER corner, Section 34, Township 117 North, Range 30 West

Certificate of Location of Government Corner

August, 1855. This corner was originally established by the General Land Office. John Ryan set a post and deposited charcoal, dug pits and trench, built mound and planted osage orange seeds at the corners of the mound.

June 13, 1967. Alfred Prieve, in the Northeast Quarter of Section 34, said his dad told him his grandfather (Alfred's grandfather) planted a cottonwood tree along the north-south quarter line of Section 34.

June 14, 1967. McCombs Knutson Associates (Dickman Knutson, county surveyor) found an iron pipe on the center line of the east-west road along the south line of Section 34. They checked the north-south quarter line and found that the large cottonwood tree was on line between the found iron pipe and the north quarter corner of Section 34.

May, 1969. Knutson replaced the iron pipe with a McLeod County cast iron monument and took available reference ties.

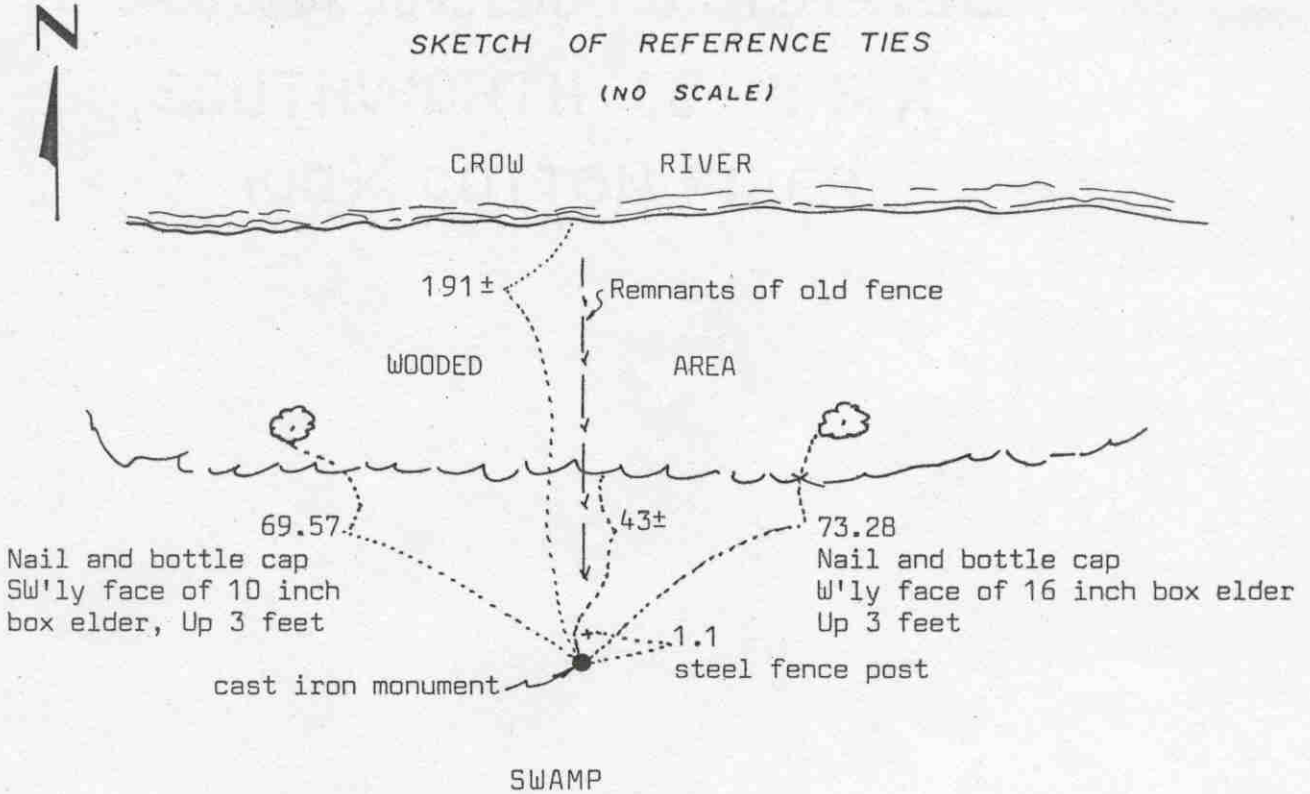
November 6, 1987. We found no ties remaining for the corner. We found the monument in good condition and took new ties. This corner is 5.87 feet south and 9.24 feet west of being on line and split between the section corners.

December 1, 1992. We found the monument in good condition and checked the reference ties.

The monument set by Knutson is accepted as marking the quarter corner. It fits an old occupation line, the center line of the east-west road, and it perpetuates the location of an older monument.

Certificate of Location of Government Corner

SKETCH OF REFERENCE TIES
(NO SCALE)



Statement of evidence relative to this corner location on sheet 2

I hereby certify that this document was prepared by me or under my direct supervision.

Willard Pellinen
Willard Pellinen
McLeod County Surveyor
License No. 9626
Date 7/23/89

OFFICE OF THE COUNTY RECORDER
MCLEOD COUNTY, MINNESOTA.

I hereby certify that this document was filed in this office at 2 o'clock P.M. on the 27th day of July, 1989.

Carmen Ostlie, County Recorder
By _____, Deputy
Document No. 229194

SOUTHEAST corner, Section 34, Township 117 North, Range 30 West

Certificate of Location of Government Corner

This corner was originally set by the Government in ¹⁸⁵⁵ 1895. John Ryan "set post to sections 34 and 35, deposited charcoal, dug pits and trench, built mound and planted osage orange seeds at corners of mound.

1968. Lew Merrill, county surveyor from 1943 to 1955 says there is an iron pipe at the corner, near an old fence post, along a north south fence.

December, 1968. McCombs Knutson Associates (Dickman Knutson, county surveyor) found a 2 inch diameter iron pipe at the south end of an old north-south fence. They set a McLeod County cast iron monument and tied off.

February 23, 1989. We found the cast iron monument in good condition and took new reference ties.

We believe the iron pipe found by McCombs Knutson Associates has perpetuated the true location of the section corner.



OFFICE OF COUNTY RECORDER
McLEOD COUNTY MINNESOTA

DOCUMENT NUMBER A-342600

CERTIFIED FILED AND/OR RECORDED ON
May 10, 2004, AT 12:00:00 PM

LYNN ETTA SCHRUPP, COUNTY RECORDER

Fees:

DUPLICATE INFORMATION	\$.50
EQUIPMENT FUND	3.00
SURCHARGE	4.50
SURCHARGE ERER	.50
GENERAL ABSTRACT	12.00
Total	\$20.50

A-342600

Received from/return to:

MN DEPT OF TRANSPORTATION
2505 TRANSPORTATION ROAD
P O BOX 768
WILLMAR, MN 56201- 0768

CERTIFICATE OF LOCATION OF GOVERNMENT CORNER

EAST QUARTER Corner of Section 35, Township 117 N., Range 30 W.

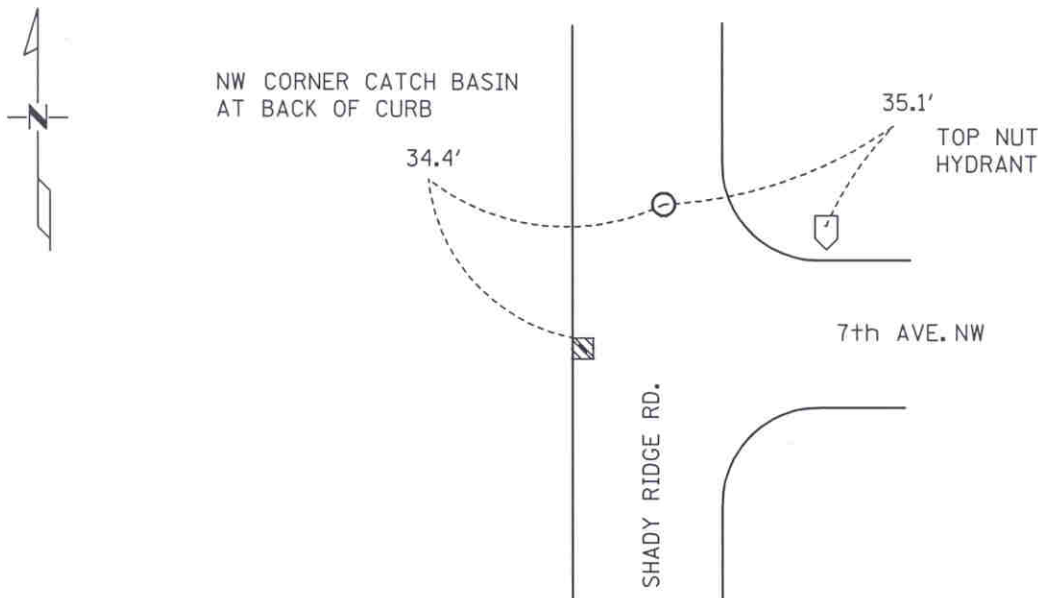
5th Principal Meridian, State of Minnesota, County of McLEOD

At the corner location shown on the sketch:

On JUNE, 2003 found a 3/4 inch iron pipe 0.1 foot below road surface 4 feet east
DATE of the centerline of shady ridge road.

left monument as found lowered monument removed monument (explain)

On _____ placed a _____
DATE



SEC. 35-117-30

SEC. 36-117-30

Statement of evidence for this corner location is on back of this page.

I hereby certify that this document was researched and prepared by me or under my direct supervision.

Signature Matthew Schlager Date 5-07-04 License No. 24640

Title: Land Surveyor Professional Engineer County Surveyor County Engineer

Certificate of Location of Government Corner

East Quarter Corner, Section 35, Township 117 North, Range 30 West

- 1856 Denis L. Langton Government Land Office completed Original Public Land survey. A wood post was set, and reference ties to 2 bearing trees.
- 1964 Roy Hansen, surveyor, found an iron pipe at the corner and used it in a survey for Section 36.
- 1967 Dickman Knutson, McLeod County Surveyor, found the iron pipe and used it in a survey in Section 35. Lew Merrill, former McLeod County Surveyor, said this iron was the correct corner, and that E. L. Higgins had used the iron around 1900.
- 1977 McCLURE'S FIRST ADDITION, in the County Records Office. Plat shows an iron monument at the Quarter Corner.
- 1984 Willard Pellinen, McLeod County Surveyor, made new ties to the corner, old ties destroyed by road construction.
- 1985 SHADY HAVEN, in the County Records Office. Plat shows an iron monument at the Quarter Corner.
- 1989 Willard Pellinen, McLeod County Surveyor, found the iron pipe and checked reference ties.
- 2003 Matthew Schlagel, Mn/DOT Land Surveyor, found the iron pipe and updated the reference ties.

For additional information, contact the Mn/DOT Surveys Section at Willmar, Mn 56201

A-342600



OFFICE OF COUNTY RECORDER
McLEOD COUNTY MINNESOTA D

2

DOCUMENT NUMBER A-342601

CERTIFIED FILED AND/OR RECORDED ON
May 10, 2004, AT 12:00:00 PM

LYNN ETTÉ SCHRUPP, COUNTY RECORDER
Fees:

DUPLICATE INFORMATION	\$.50
EQUIPMENT FUND	3.00
SURCHARGE	4.50
SURCHARGE ERER	.50
GENERAL ABSTRACT	12.00
Total	\$20.50

Received from/return to:
MN DEPT OF TRANSPORTATION
2505 TRANSPORTATION ROAD
P O BOX 768
WILLMAR, MN 56201- 0768

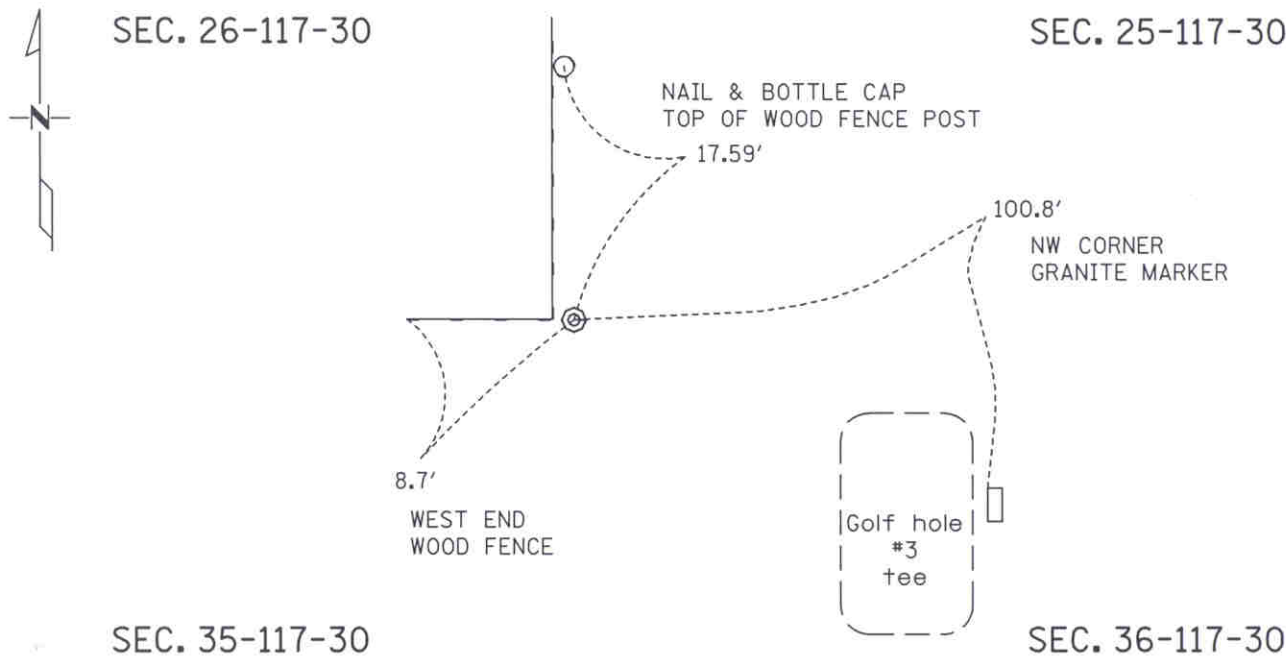
A-342601

CERTIFICATE OF LOCATION OF GOVERNMENT CORNER

_____ NORTHEAST _____ Corner of Section 35 , Township 117 N. , Range 30 W.
_____ 5th _____ Principal Meridian, State of Minnesota, County of McLEOD

At the corner location shown on the sketch:

- On JUNE, 2003 found a Cast Iron Monument at ground surface
DATE 0.3 feet east of a wood fence corner.
- left monument as found lowered monument removed monument (explain)
- On _____ placed a _____
DATE _____



Statement of evidence for this corner location is on back of this page.

I hereby certify that this document was researched and prepared by me or under my direct supervision.

Signature Matthew J. Schlager Date 5-07-04 License No. 24640
Title: Land Surveyor Professional Engineer County Surveyor County Engineer

Certificate of Location of Government Corner

Northeast Corner, Section 35, Township 117 North, Range 30 West

- 1856 Denis L. Langton Government Land Office completed Original Public Land survey. A post was set, and reference ties to 4 bearing trees.
- 1967 Dickman Knutson, McLeod County Surveyor, found an iron pipe at the intersection of fences running east, west and north. L. H. Merrill, former McLeod County Surveyor, said this iron pipe is the correct corner. He has used the pipe, and E. L Higgins, former McLeod County Surveyor used the pipe before 1920.
- 1977 KAMLIN GROVE ADDITION, in the County Records Office. Plat shows an iron monument at the Northeast Corner.
- 1989 Willard Pellinen, McLeod County Surveyor, found the cast iron monument in good condition, and made new reference ties.
- 1993 Mn/DOT survey crew (Gene East, crew chief) found the cast iron monument in good condition.
- 2003 Matthew Schlagel, Mn/DOT Land Surveyor, found the cast iron monument in good condition, and updated ties.

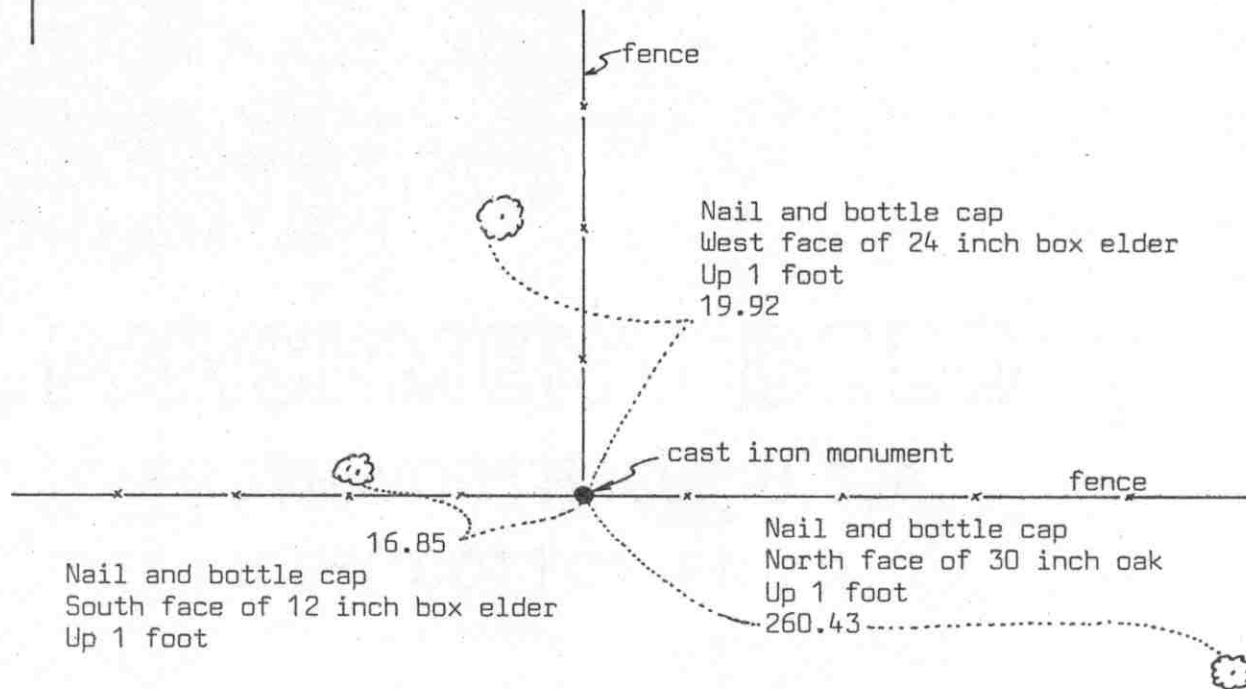
For additional information, contact the Mn/DOT Surveys Section at Willmar, Mn 56201

A-342601

Certificate of Location of Government Corner



SKETCH OF REFERENCE TIES
(NO SCALE)



Statement of evidence relative to this corner location on sheet 2

I hereby certify that this document was prepared by me or under my direct supervision.

Willard Pellinen
 Willard Pellinen
 McLeod County Surveyor
 License No. 9626
 Date 5/20/89

OFFICE OF THE COUNTY RECORDER
MCLEOD COUNTY, MINNESOTA.

I hereby certify that this document was filed in this office at 9 o'clock A.M. on the 18th day of July 19 89.

Sarmen Ostlie, County Recorder
 By _____, Deputy

Document No. 229067

Certificate of Location of Government Corner

This corner was originally set by the Government Land Office in 1856. D.L.Langton "set quarter section post, drove stake, raised mound of earth and planted locust seeds as per instructions."

1966. Roy Hansen, Land Surveyor, used the fence intersection as the quarter corner. All the adjoining land owners agreed the fence intersection is the correct corner.

October 12, 1971. McCombs Knutson Associates (Dickman Knutson, county surveyor) set a McLeod County cast iron monument in place of the iron rod set by Roy Hansen, and took reference ties.

February 21, 1989, we found the cast iron monument in good condition but all the reference ties were destroyed. We took new reference ties.

We believe the fence corner has perpetuated the correct location of the quarter corner.



OFFICE OF COUNTY RECORDER
McLEOD COUNTY MINNESOTA

2

DOCUMENT NUMBER A-342599

CERTIFIED FILED AND/OR RECORDED ON
May 10, 2004, AT 12:00:00 PM

LYNN ETTE SCHRUPP, COUNTY RECORDER
Fees:

DUPLICATE INFORMATION	\$.50
EQUIPMENT FUND	3.00
SURCHARGE	4.50
SURCHARGE ERER	.50
GENERAL ABSTRACT	12.00
Total	\$20.50

Received from/return to:
MN DEPT OF TRANSPORTATION
2505 TRANSPORTATION ROAD
P O BOX 768
WILLMAR, MN 56201- 0768

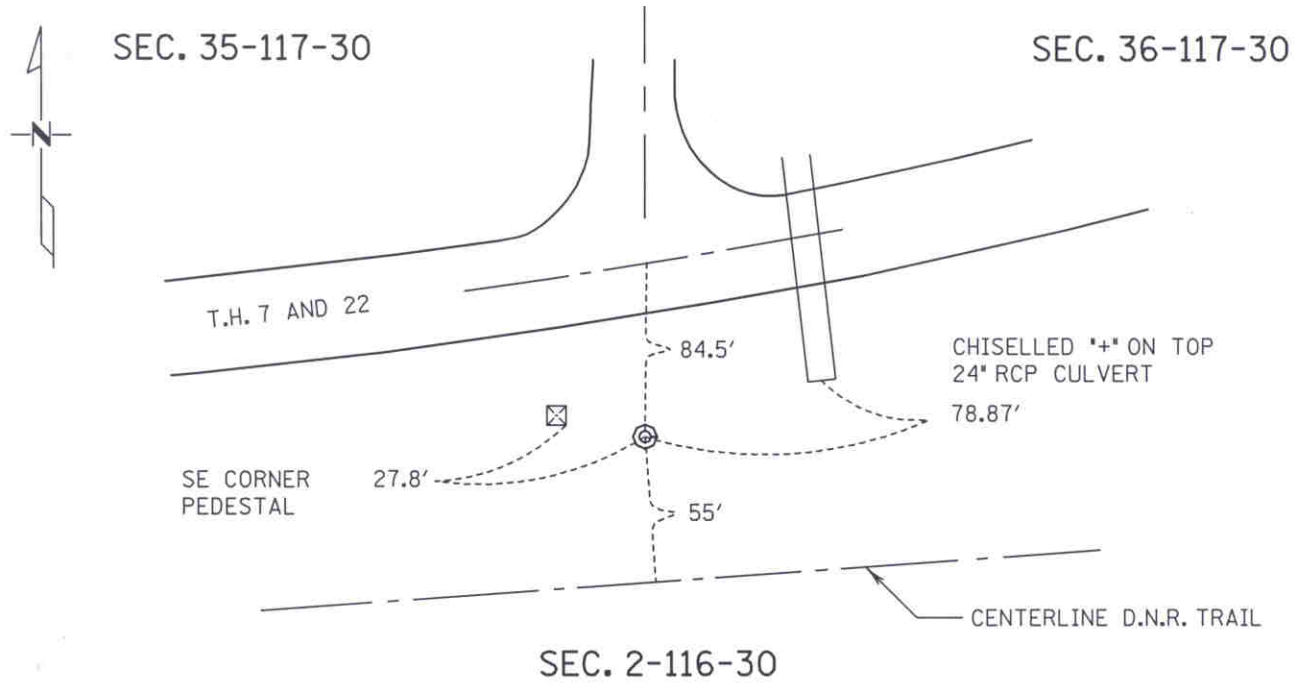
A-342599

CERTIFICATE OF LOCATION OF GOVERNMENT CORNER

SOUTHEAST Corner of Section 35, Township 117 N., Range 30 W.
5th Principal Meridian, State of Minnesota, County of McLEOD

At the corner location shown on the sketch:

- On JUNE, 2003 found a Cast Iron Monument 0.2 feet below ground surface.
DATE
- left monument as found lowered monument removed monument (explain)
- On _____ placed a _____
DATE



Statement of evidence for this corner location is on back of this page.

I hereby certify that this document was researched and prepared by me or under my direct supervision.

Signature Matthew Schlegel Date 5-07-04 License No. 24640
 Title: Land Surveyor Professional Engineer County Surveyor County Engineer

Certificate of Location of Government Corner

Southeast Corner, Section 35, Township 117 North, Range 30 West

- 1856 John Ryan, Government Land Office completed Original Public Land Survey of the fourth Standard Parallel. Set Post corner to sections 35 and 36. deposited charcoal, dug pits and trench, built mound and planted Osage orange seed at corners of mound.
- 1944 Mn/DOT Right of way map shows an iron pin at the corner.
- 1960's Lew Merrill, former McLeod County Surveyor, says that the iron pin at the corner is good.
- 1967 State Conservation Department found an iron pin at the corner and used it for a survey.
- 1967 Dickman Knutson, McLeod County Surveyor, found an iron pin and replaced it with a McLeod County cast iron monument in 1968.
- 1968 RIVERSIDE ADDITION, in the County Records Office. Plat shows an iron monument at the Southeast Corner.
- 1973 TENPART ADDITION, in the County Records Office. Plat depicts that the Section corner is 161.41 feet South of the southeast corner of the plat, with no mention of the type of monument.
- 1987 Willard Pellinen, McLeod County Surveyor, Monument and reference ties destroyed by construction of a service road. Corner was reset using previous surveys in sections 35 and 36. They set a ½ inch by 14-inch iron pipe and made reference ties.
- 1987 Willard Pellinen, McLeod County Surveyor, replaced the iron pipe with a McLeod County cast iron monument.
- 1989 Willard Pellinen, McLeod County Surveyor, found cast iron monument and checked reference ties.
- 1993 Mn/DOT survey crew (Gene East, crew chief) found the cast iron monument in good condition.
- 2003 Matthew Schlagel, Mn/DOT Land Surveyor, found the cast iron monument in good condition and updated ties.

For additional information, contact the Mn/DOT Surveys Section at Willmar, Mn 56201

A-342599



OFFICE OF COUNTY RECORDER
MCLEOD COUNTY MINNESOTA

2

A-342593

DOCUMENT NUMBER A-342593

CERTIFIED FILED AND/OR RECORDED ON
May 10, 2004, AT 12:00:00 PM

LYNN ETTE SCHRUPP, COUNTY RECORDER
Fees:

DUPLICATE INFORMATION	\$.50
EQUIPMENT FUND	3.00
SURCHARGE	4.50
SURCHARGE ERER	.50
GENERAL ABSTRACT	12.00
Total	\$20.50

Received from/return to:

MN DEPT OF TRANSPORTATION
2505 TRANSPORTATION ROAD
P O BOX 768
WILLMAR, MN 56201- 0768

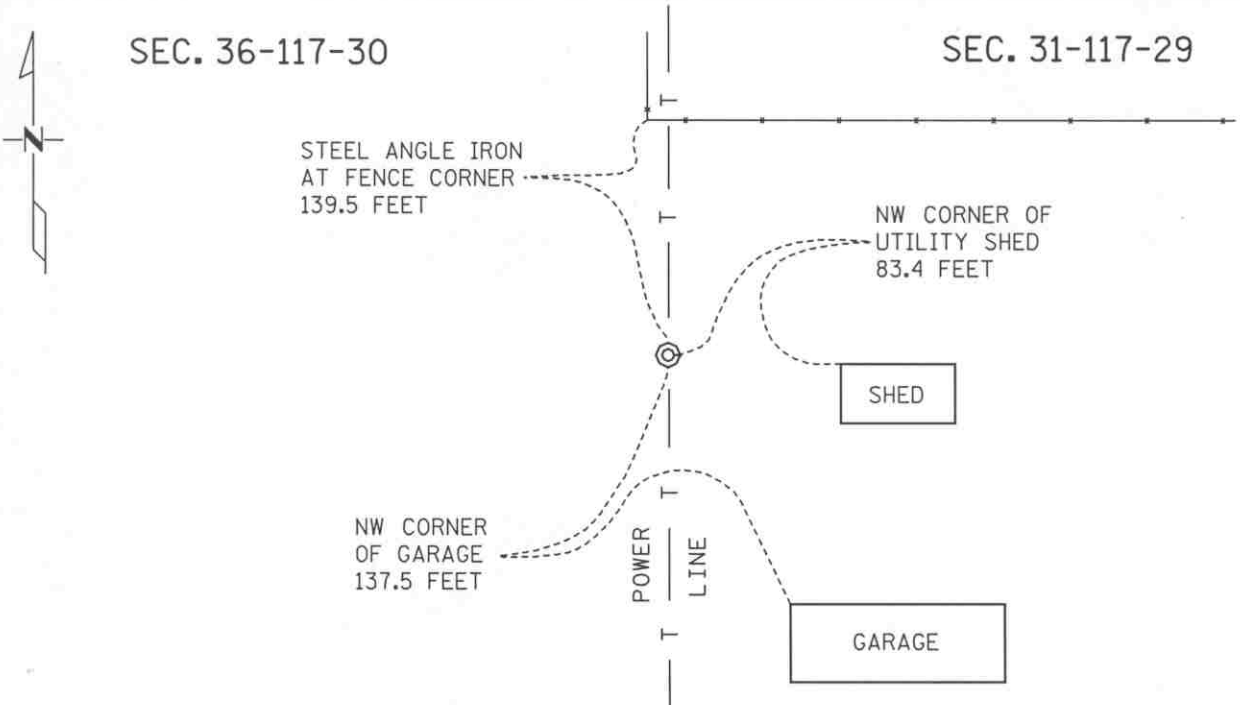
CERTIFICATE OF LOCATION OF GOVERNMENT CORNER

East Quarter Corner of Section 36, Township 117 N., Range 30 N.

5th Principal Meridian, State of Minnesota, County of McLeod

At the corner location shown on the sketch:

- On June 2003 found an Cast Iron Monument at ground surface
DATE
- left monument as found lowered monument removed monument (explain)
- On _____ placed a _____
DATE



Statement of evidence for this corner location is on back of this page.

I hereby certify that this document was researched and prepared by me or under my direct supervision.

Signature Matthew J. Schlager Date 5-07-04 License No. 24640
 Title: Land Surveyor Professional Engineer County Surveyor County Engineer

Certificate of Location of Government Corner

East Quarter Corner, Section 36, Township 117 North, Range 30 West

- 1855 John Ryan, Government Land Office completed Original Public Land survey. A wood post was set, and reference ties to 2 bearing trees.
- 1879 NORTH HALF OF HUTCHINSON., in the County Recorders Office. Plat depicts that the quarter corner is the northeast corner of the plat, with no mention of the type of monument.
- 1892 There was a controversy as to where the quarter corner should be. John W. Hutchinson claimed he was the owner of a tract of land described as beginning at the Southwest corner of Section 31-T117-R29; thence running north 137 feet; thence east 1630 feet; south 92 feet; thence west 1630 feet to the point of beginning. Esther White claimed she was the owner of Block 8 in the North half of Hutchinson, which is part of the land in question. White claimed the land Hutchinson claimed is the north end of the land she owned. The court found in favor of White, but said the evidence was not very satisfactory, but the burden of proof rested upon Hutchinson to prove that the line claimed by him was the true one.
- 1968 Dickman Knutson, McLeod County Surveyor, set a temporary east quarter corner half way between the section corners on line with the southerly extension of the fence. This fell about 137 feet south of the fence corner. This fence corner has been accepted as the northwest corner of the North Half of Hutchinson.
- 1960's Lew Merrill, former McLeod County Surveyor, said the corner falls 135 to 140 feet south of the fence corner and in the 1930's he set a re-rod at the corner.
- 1969 Dickman Knutson, McLeod County Surveyor, dug around the temporary quarter corner and about 2 feet south found an old rotten wood post down 2 feet, with a re-rod on one side and an old rotten wood stake on the other side. Knutson checked monumentation and occupation lines in section 36 and what he found checked fairly well with the quarter corner being at the found post. Knutson set a McLeod County cast iron monument in place of the post and took reference ties. The found occupation lines and monumentation included 3 iron monuments found by Roy Hanson in 1967 and the plat of Johnson's Court, platted in 1957 by A. S. Miller.
- 1989 Willard Pellinen, McLeod County Surveyor, found the cast iron monument in good condition but the reference ties were gone. New ties were made.
- 2003 Matthew Schlagel, Mn/DOT Land Surveyor, found the cast iron monument in good condition and updated ties.

For additional information, contact the Mn/DOT Surveys Section at Willmar, Mn 56201.

A-342593



OFFICE OF COUNTY RECORDER
 McLEOD COUNTY MINNESOTA

DOCUMENT NUMBER A-342604

CERTIFIED FILED AND/OR RECORDED ON
 May 10, 2004, AT 12:00:00 PM

LYNN ETTIE SCHRUPP, COUNTY RECORDER

Fees:	
DUPLICATE INFORMATION	\$.50
EQUIPMENT FUND	3.00
SURCHARGE	4.50
SURCHARGE ERER	.50
GENERAL ABSTRACT	12.00
Total	\$20.50

A-342604

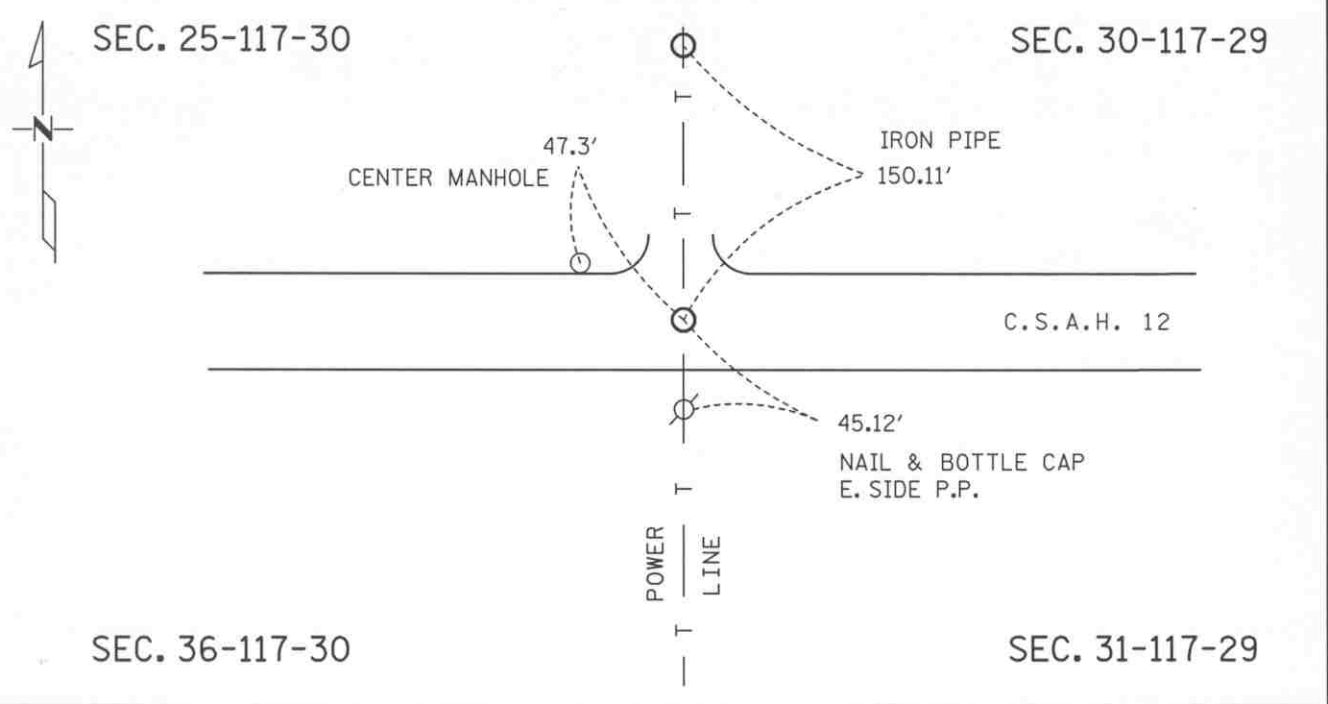
Received from/return to:
 MN DEPT OF TRANSPORTATION
 2505 TRANSPORTATION ROAD
 P O BOX 768
 WILLMAR, MN 56201- 0768

CERTIFICATE OF LOCATION OF GOVERNMENT CORNER

_____ NORTHEAST _____ Corner of Section 36 , Township 117 N. , Range 30 W.
 _____ 5th _____ Principal Meridian, State of Minnesota, County of McLEOD

At the corner location shown on the sketch:

- On JUNE, 2003 found a 3/4 inch Iron pipe 0.3 feet below the road surface.
DATE
- left monument as found lowered monument removed monument (explain)
- On _____ placed a _____
DATE



Statement of evidence for this corner location is on back of this page.

I hereby certify that this document was researched and prepared by me or under my direct supervision.

Signature Matthew J. Schlager Date 5-07-04 License No. 24640
 Title: Land Surveyor Professional Engineer County Surveyor County Engineer

Certificate of Location of Government Corner

Northeast Corner, Section 36, Township 117 North, Range 30 West

- 1855 John Ryan, completed Original Public Land survey. A wood post was set and reference ties to 4 bearing trees.
- 1933 Survey shows a 3/8 inch steel rod beside an old post stub and a stone on end at the corner.
- 1967 Dickman Knutson, McLeod County Surveyor, found a steel rod and a stone. L.H. Merrill, surveyor, says this is the same corner used in 1933 and before. Knutson replaced the rod and stone with a McLeod County cast iron monument and made reference ties.
- 1978 BOYLE'S ADDITION, in the County Recorders Office. Plat shows a McLeod County cast iron monument at the Northeast Corner.
- 1989 Willard Pellinen, McLeod County Surveyor, found the cast iron monument in good condition but the reference ties were destroyed. New ties were made.
- 1993 Mn/DOT survey crew (Gene East, crew chief) found the cast iron monument in good condition.
- Jeff Rausch, McLeod County Surveyor, set 3/4 Iron Pipe from ties after road construction.
- 2004 Matthew Schlagel, Mn/DOT Land Surveyor, found a 3/4 inch iron pipe 0.3 feet below the surface of a newer bituminous road, and updated chain ties.

For additional information, contact the Mn/DOT Surveys Section at Willmar, Mn 56201

A-342604



OFFICE OF COUNTY RECORDER
 McLEOD COUNTY MINNESOTA

DOCUMENT NUMBER A-342602

CERTIFIED FILED AND/OR RECORDED ON
May 10, 2004, AT 12:00:00 PM

LYNN ETTIE SCHRUPP, COUNTY RECORDER

Fees:	
DUPLICATE INFORMATION	\$.50
EQUIPMENT FUND	3.00
SURCHARGE	4.50
SURCHARGE ERER	.50
GENERAL ABSTRACT	12.00
Total	\$20.50

A-342602

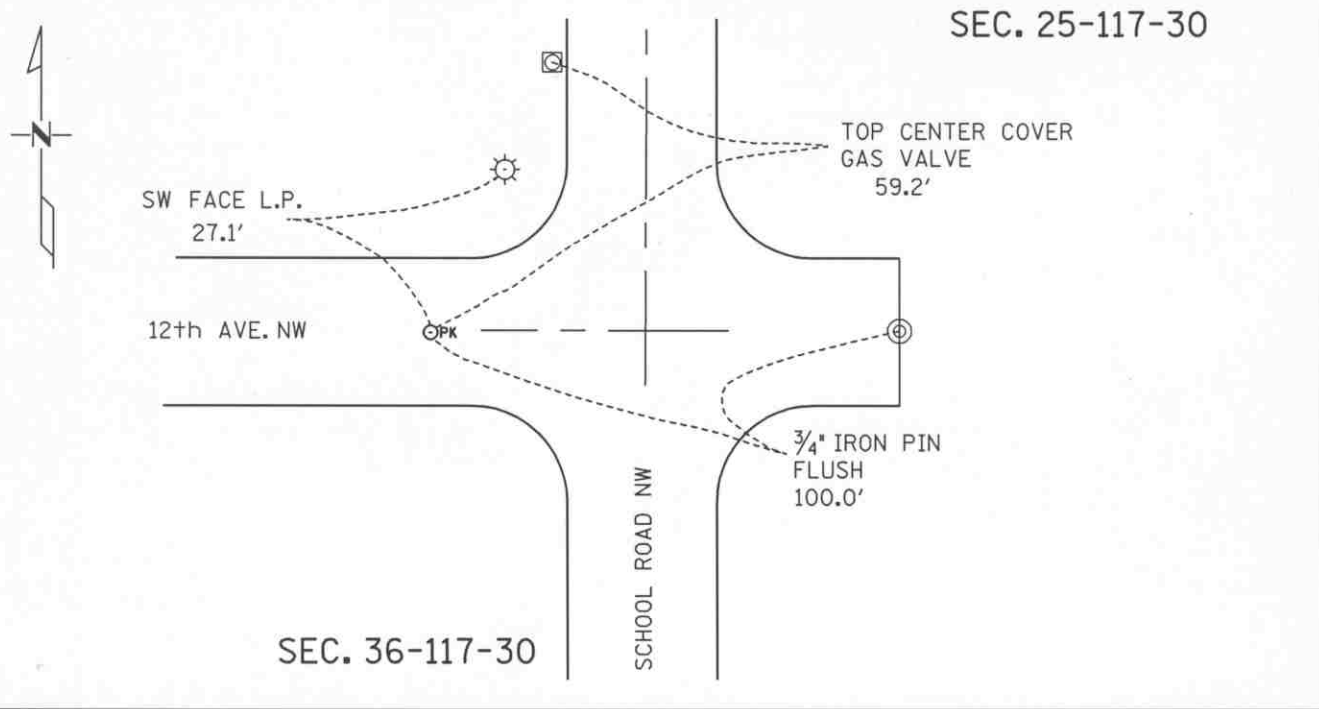
Received from/return to:
 MN DEPT OF TRANSPORTATION
 2505 TRANSPORTATION ROAD
 P O BOX 768
 WILLMAR, MN 56201- 0768

CERTIFICATE OF LOCATION OF GOVERNMENT CORNER

NORTH QUARTER Corner of Section 36, Township 117 W., Range 30 W.
5th Principal Meridian, State of Minnesota, County of McLEOD

At the corner location shown on the sketch:

- On MARCH, 15 2004 found an PK nail at bituminous surface of road
DATE
near the centerline of 12th
- left monument as found lowered monument removed monument (explain)
- On _____ placed a _____
DATE



Statement of evidence for this corner location is on back of this page.

I hereby certify that this document was researched and prepared by me or under my direct supervision.

Signature *Matthew Schlager* Date 5-07-04 License No. 24640
 Title: Land Surveyor Professional Engineer County Surveyor County Engineer

Certificate of Location of Government Corner

North Quarter Corner, Section 36, Township 117 North, Range 30 West

- 1856 Denis L. Langton Government Land Office completed Original Public Land survey. A wood post was set, and reference ties to 2 bearing trees.
- 1967 Dickman Knutson, McLeod County Surveyor, found an iron pipe, which has been used as the quarter corner for many years, according to L. H. Merrill, former McLeod County Surveyor. The iron pipe was replaced with a cast iron monument, and made reference ties.
- 1972 KRSIEAN ACRES, in the County Records Office. Plat shows an iron monument at the Quarter Corner.
- 1974 Willard Pellinen, McLeod County Surveyor, dug at the position of the cast iron monument and found another iron pipe down 3 feet, below the cast iron monument. Replaced the cast iron monument.
- 1989 Willard Pellinen, McLeod County Surveyor, found the cast iron monument in good condition, and made new reference ties.
- 2003 Jeff Rausch, McLeod County Surveyor, set PK nail at position of Quarter Corner. Position was determined by using adjacent plat corners.
- 2003 Matthew Schlagel, Mn/DOT Land Surveyor, found the PK nail that Jeff Rausch set. Made new reference ties.

For additional information, contact the Mn/DOT Surveys Section at Willmar, Mn 56201

A-342602



OFFICE OF COUNTY RECORDER
McLEOD COUNTY MINNESOTA

DOCUMENT NUMBER A-342603

CERTIFIED FILED AND/OR RECORDED ON
May 10, 2004, AT 12:00:00 PM

LYNN ETTE SCHRUPP, COUNTY RECORDER
Fees:

DUPLICATE INFORMATION	\$.50
EQUIPMENT FUND	3.00
SURCHARGE	4.50
SURCHARGE ERER	.50
GENERAL ABSTRACT	12.00
Total	\$20.50

A-342603

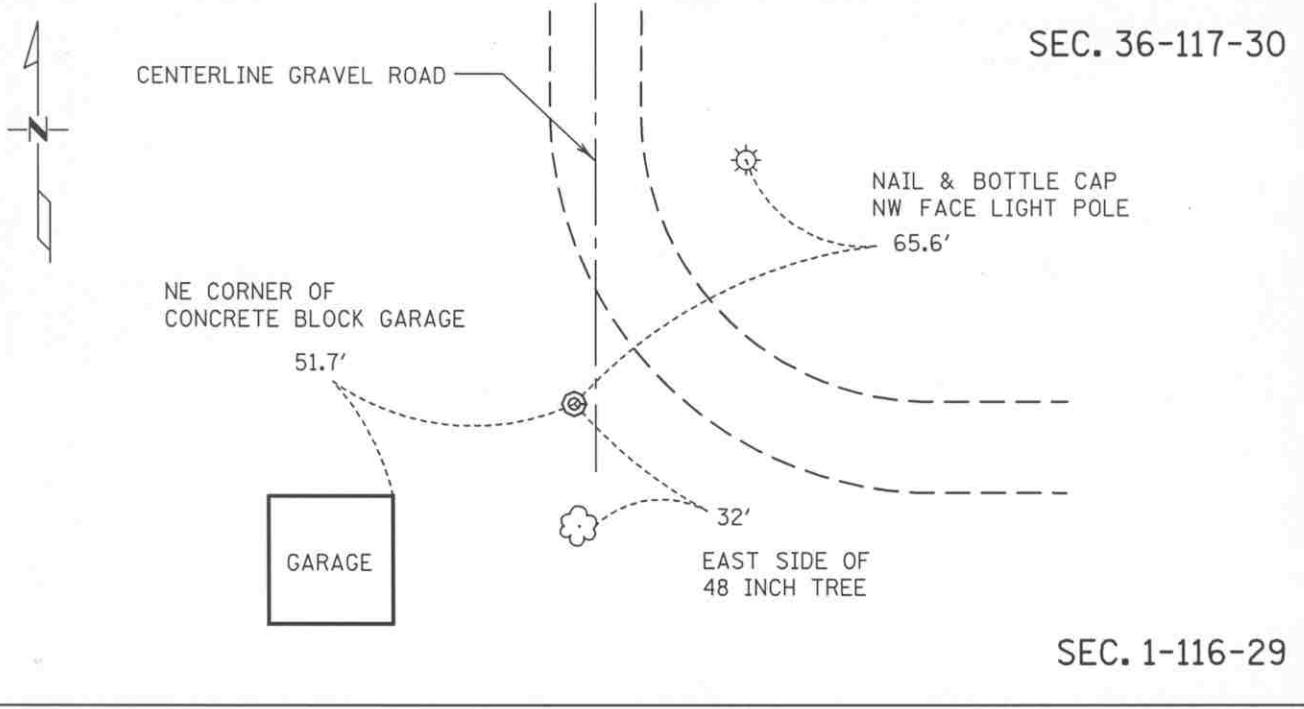
Received from/return to:
MN DEPT OF TRANSPORTATION
2505 TRANSPORTATION ROAD
P O BOX 768
WILLMAR, MN 56201- 0768

CERTIFICATE OF LOCATION OF GOVERNMENT CORNER

SOUTH QUARTER Corner of Section 36, Township 117 N., Range 30 W.
5th Principal Meridian, State of Minnesota, County of McLEOD

At the corner location shown on the sketch:

- On JUNE, 2003 found a Cast Iron Monument 0.2 feet below ground surface 3 feet
DATE west of the southerly extension of the centerline of a gravel road.
- left monument as found lowered monument removed monument (explain)
- On _____ placed a _____
DATE



Statement of evidence for this corner location is on back of this page.

I hereby certify that this document was researched and prepared by me or under my direct supervision.

Signature Matthew J. Schlager Date 5-07-04 License No. 24640
 Title: Land Surveyor Professional Engineer County Surveyor County Engineer

Certificate of Location of Government Corner

South Quarter Corner, Section 36, Township 117 North, Range 30 West

- 1855 John Ryan, Government Land Office completed Original Public Land Survey of the fourth Standard Parallel. Set Quarter section post. Deposited charcoal, dug pits and trench, built mound and planted Osage orange seed at corner of mound.
- 1943 Lew Merrill, former McLeod County Surveyor, said there is an iron pipe at the corner. Which he, and E. L Higgins, former McLeod County Surveyor have used as the correct corner.
- 1966 Roy Hansen, Surveyor, found an iron pipe at the corner.
- 1967 Dickman Knutson, McLeod County Surveyor, found an iron pipe at the corner and replaced it with a McLeod County cast iron monument.
- Willard Pellinen, McLeod County Surveyor, measured the south line of Section 36, the south quarter corner falls within 1 ½ feet of being half way between section corners.
- 1989 Willard Pellinen, McLeod County Surveyor, found the cast iron monument in good condition, and the reference ties were good.
- 1993 Mn/DOT survey crew (Gene East, crew chief) found the cast iron monument in good condition.
- 2003 Matthew Schlagel, Mn/DOT Land Surveyor, found the cast iron monument in good condition and updated ties.

For additional information, contact the Mn/DOT Surveys Section at Willmar, Mn 56201

A-342603



OFFICE OF COUNTY RECORDER
 McLEOD COUNTY MINNESOTA

DOCUMENT NUMBER A-342598

CERTIFIED FILED AND/OR RECORDED ON
 May 10, 2004, AT 12:00:00 PM

LYNN ETTÉ SCHRUPP, COUNTY RECORDER
 Fees:

DUPLICATE INFORMATION	\$.50
EQUIPMENT FUND	3.00
SURCHARGE	4.50
SURCHARGE ERER	.50
GENERAL ABSTRACT	12.00
Total	\$20.50

A-342598

Received from/return to:
 MN DEPT OF TRANSPORTATION
 2505 TRANSPORTATION ROAD
 P O BOX 768
 WILLMAR, MN 56201- 0768

CERTIFICATE OF LOCATION OF GOVERNMENT CORNER

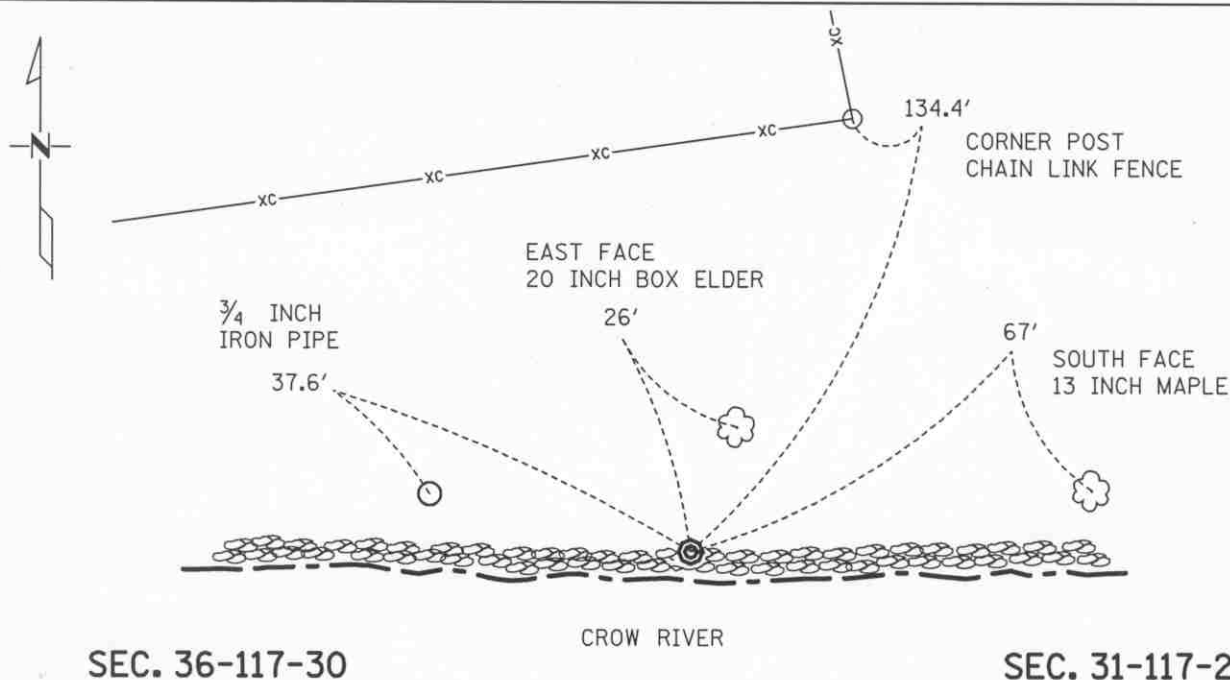
REFERENCE MONUMENT ON East line of Section 36, Township 117 N., Range 30 W.
5th Principal Meridian, State of Minnesota, County of McLEOD

At the corner location shown on the sketch:

On JUNE, 2003 found a Cast Iron Monument at the surface in the top of the
DATE riprap of the bank of the Crow River.

left monument as found lowered monument removed monument (explain)

On _____ placed a _____
DATE



SEC. 36-117-30

CROW RIVER

SEC. 31-117-29

Statement of evidence for this corner location is on back of this page.

I hereby certify that this document was researched and prepared by me or under my direct supervision.

Signature Matthew J. Schlager Date 5-07-04 License No. 24640
 Title: Land Surveyor Professional Engineer County Surveyor County Engineer

Certificate of Location of Government Corner

Ref. Monument of East line, Section 36, Township 117 North, Range 30 West

- 1970 Dickman Knutson, McLeod County Surveyor, set a cast iron monument near the north shore of the Crow River on the east of section 36. The Southeast corner of Section 36 falls in the river. Made chain ties.
- 1989 Willard Pellinen, McLeod County Surveyor, found the cast iron monument in good condition and made new reference ties.
- 1993 Mn/DOT survey crew (Gene East, crew chief) found the cast iron monument in good condition.
- 2003 Matthew Schlagel, Mn/DOT Land Surveyor, found the cast iron monument in good condition and updated ties.

For additional information, contact the Mn/DOT Surveys Section at Willmar, Mn 56201

A-342598